

CAM SYSTEM

7

Eccentric self-locking clamping device



Set CAM SYSTEM "t"

Eccentric self-locking clamping device

Page 7.3



Set CAM SYSTEM "s"

Eccentric self-locking clamping device

Page 7.6



CAM SYSTEM "t"

Eccentric self-locking clamping device

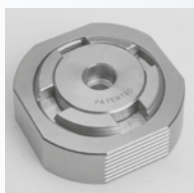
Page 7.4



CAM SYSTEM "s"

Eccentric self-locking clamping device

Page 7.7



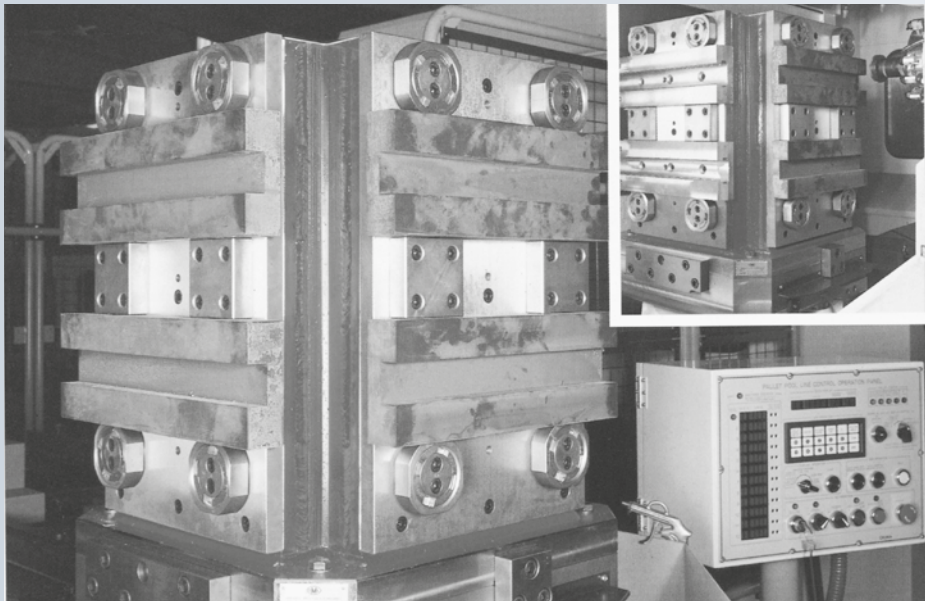
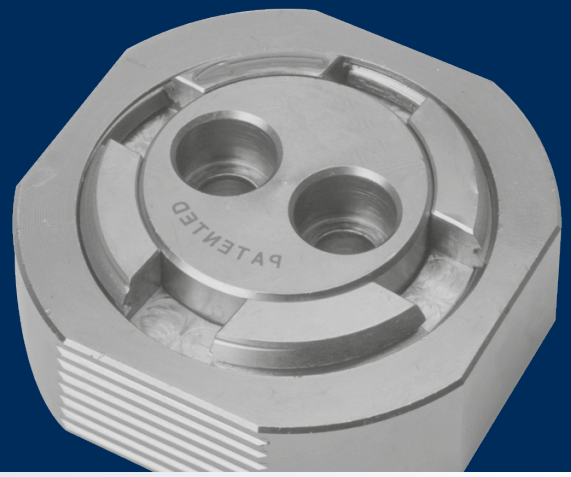
CAM SYSTEM "g"

Eccentric self-locking clamping device

Page 7.5

CAM SYSTEM

Eccentric self-locking clamping device



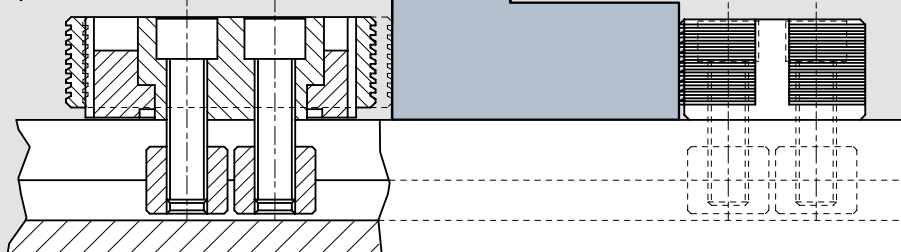
The **CAM SYSTEM** has been developed and patented to easily clamp workpieces with varied forms. This compact product enables double locking (Axial and Radial) using the eccentric and propeller principle. With a rotation of approximately 15°, contact is made with the workpiece with the complete clamping face of the CAM.

The **CAM SYSTEM** clamps the workpiece with a clamping force of 4,000 kg (**t**) and 2,000 kg (**s**).

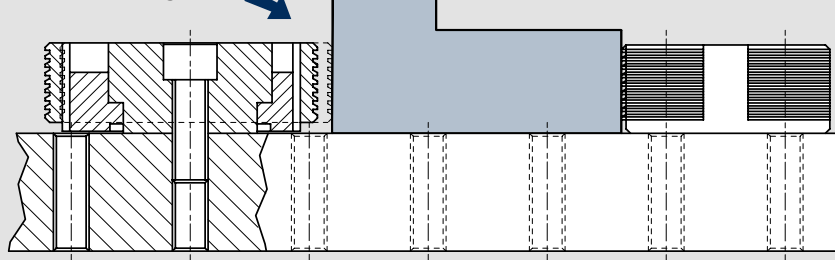
CAM SYSTEM is supplied with both cap head bolts and T-nuts to suit the particular machine tool cross slots.

CAM SYSTEM "g" is supplied singly, to the customer detailed grid specification.

displacement 3 mm (**t**)
displacement 4 mm (**s**)



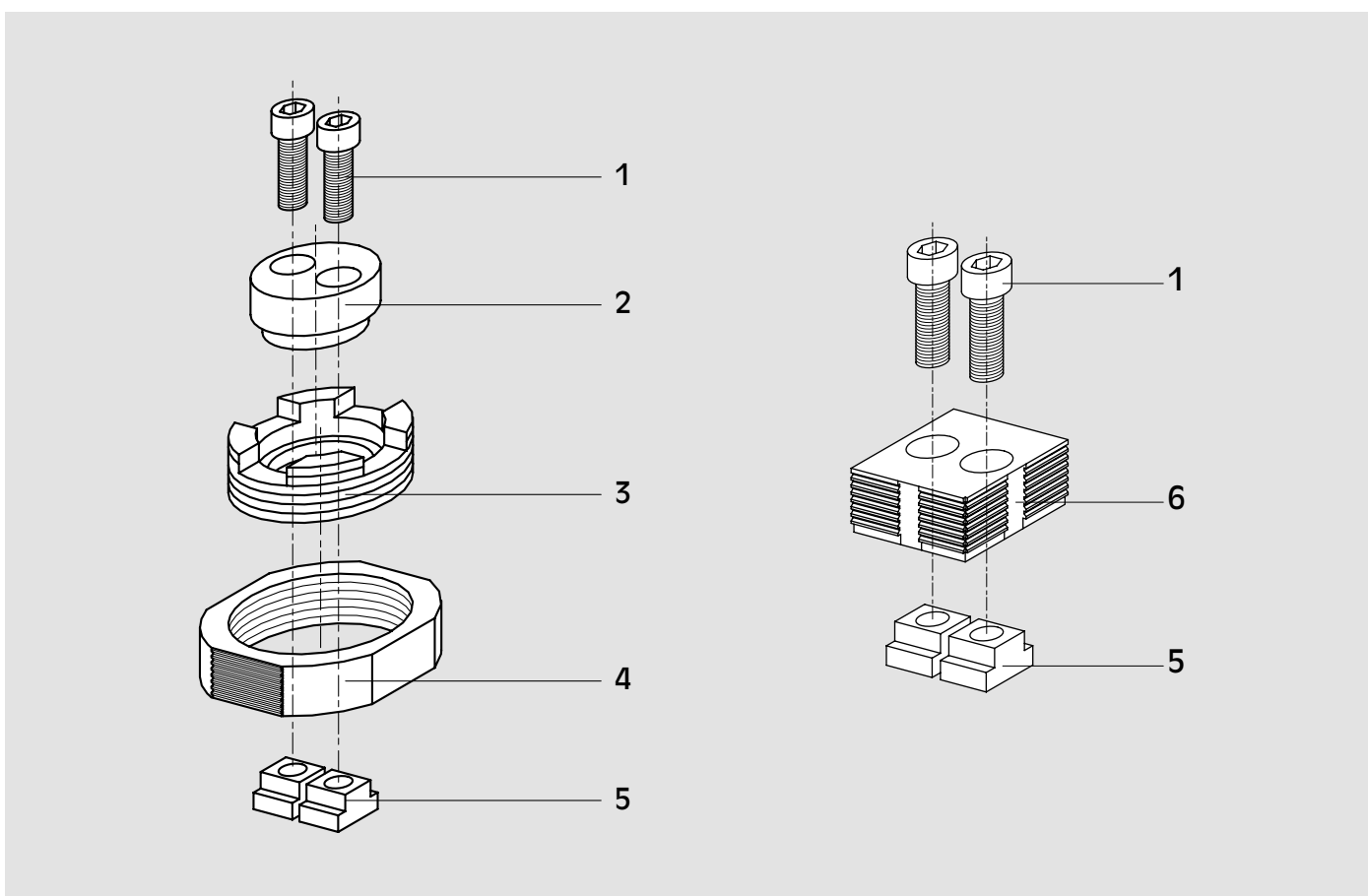
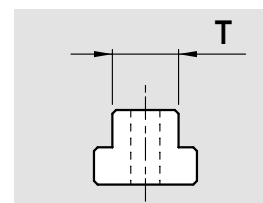
displacement 3 mm (**g**)





Set CAM SYSTEM "t" complete with:
 N. 4 CAM SYSTEM "t"
 N. 4 fixed block CAM SYSTEM 't'
 N. 8 pair of T-nuts with screw
 N. 1 key for CAM SYSTEM 't'
 wooden packing case

| Id. No. | T mm |
|----------|---------|
| 77584414 | 14 |
| 77584416 | 16 |
| 77584418 | 18 |
| 77584420 | 20 |
| 77584422 | 22 |

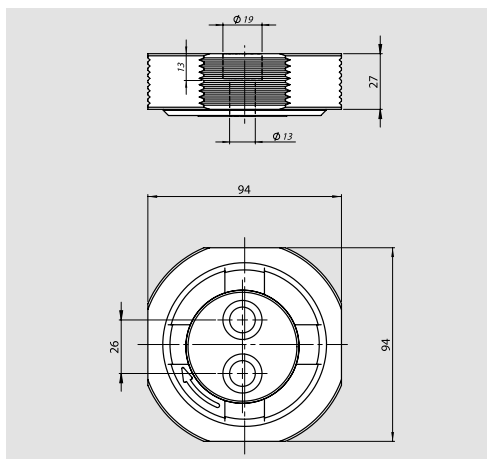


Description

| | | | | | |
|----|-----------------|----|-------------------|----|-------------|
| 01 | Screw | 03 | Eccentric element | 05 | T-nuts |
| 02 | Central element | 04 | Clamping element | 06 | Fixed block |

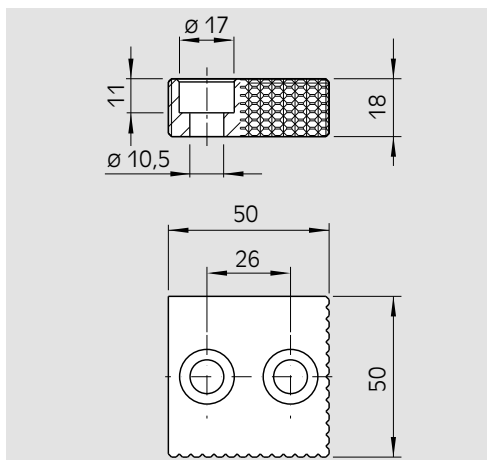
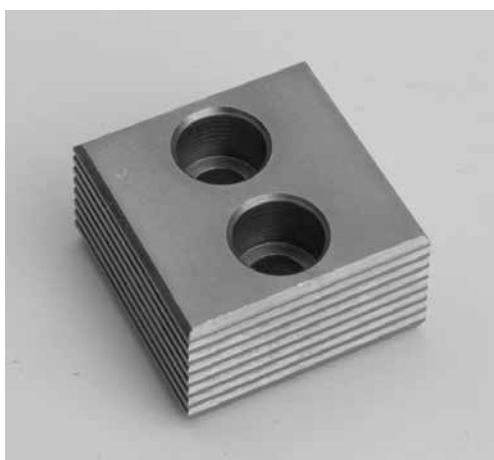
CAM SYSTEM "t"

Eccentric self-locking clamping device



CAM SYSTEM "t"
single

| Id. No. |
|----------|
| 58445010 |



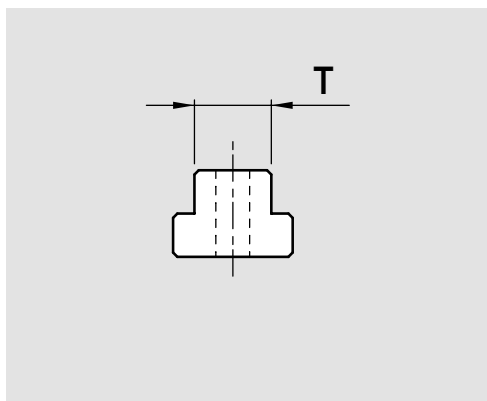
Fixed block
CAM SYSTEM "t"

| Id. No. |
|----------|
| 58440400 |



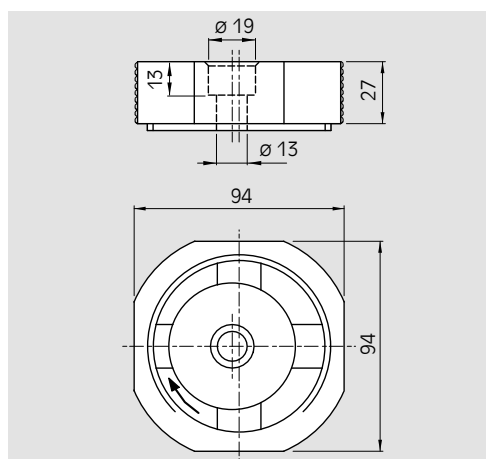
Key for
CAM SYSTEM "t"

| Id. No. |
|----------|
| 58440800 |



Pair of T-nuts
with screw
CAM SYSTEM "t"

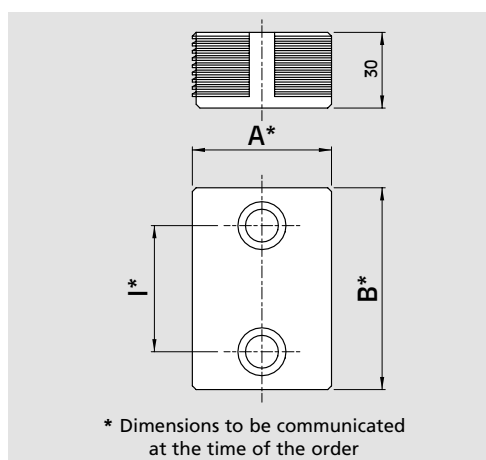
| Id. No. | T mm |
|----------|---------|
| 58442593 | 14 |
| 58442594 | 16 |
| 58442595 | 18 |
| 58442596 | 20 |
| 58442597 | 22 |



CAM SYSTEM "g"
single

Id. No.

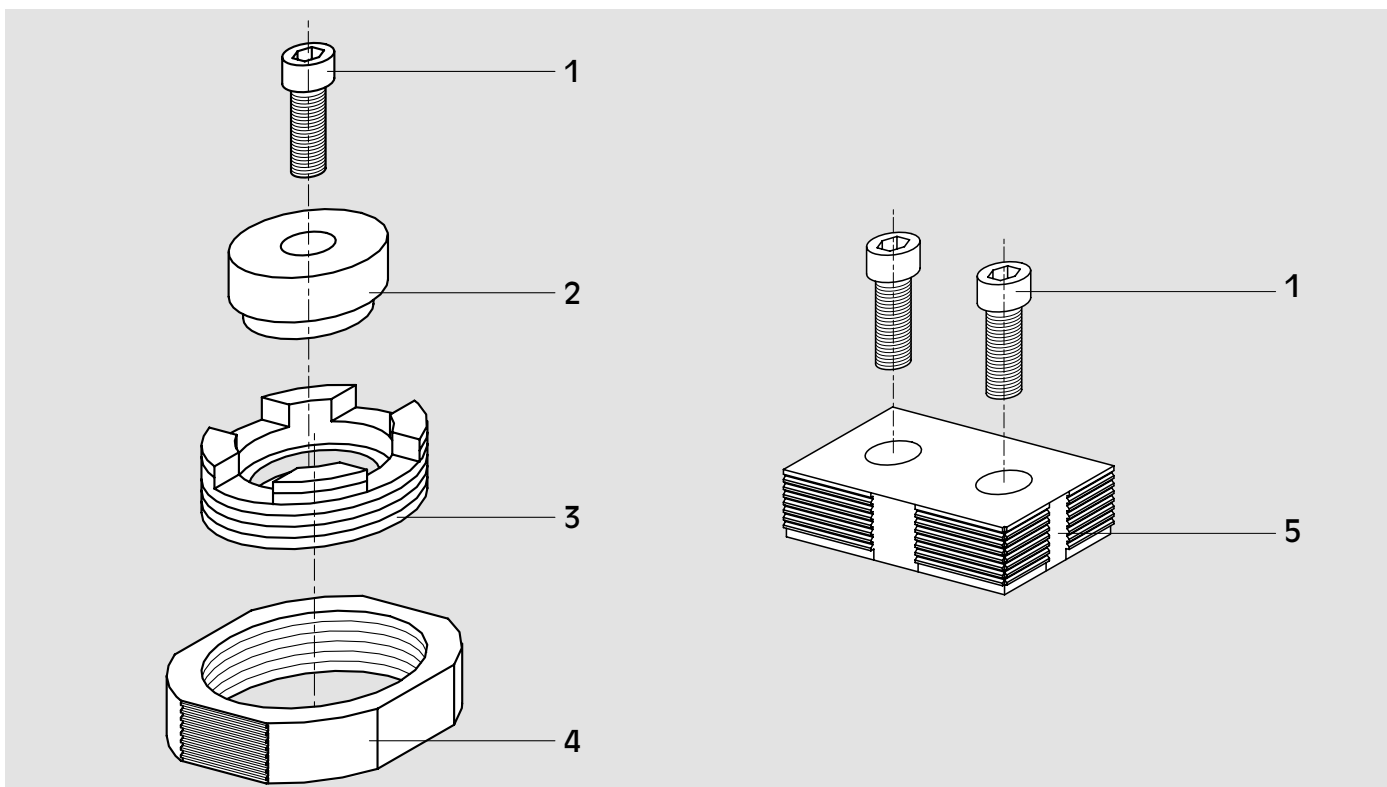
58445020



Fixed block
CAM SYSTEM "g"

Id. No.

58441400



Description

01 Screw

02 Central element

03 Eccentric element

04 Clamping element

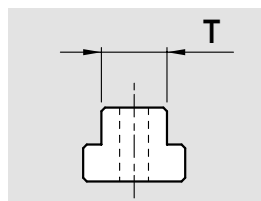
05 Fixed block

CAM SYSTEM "s"

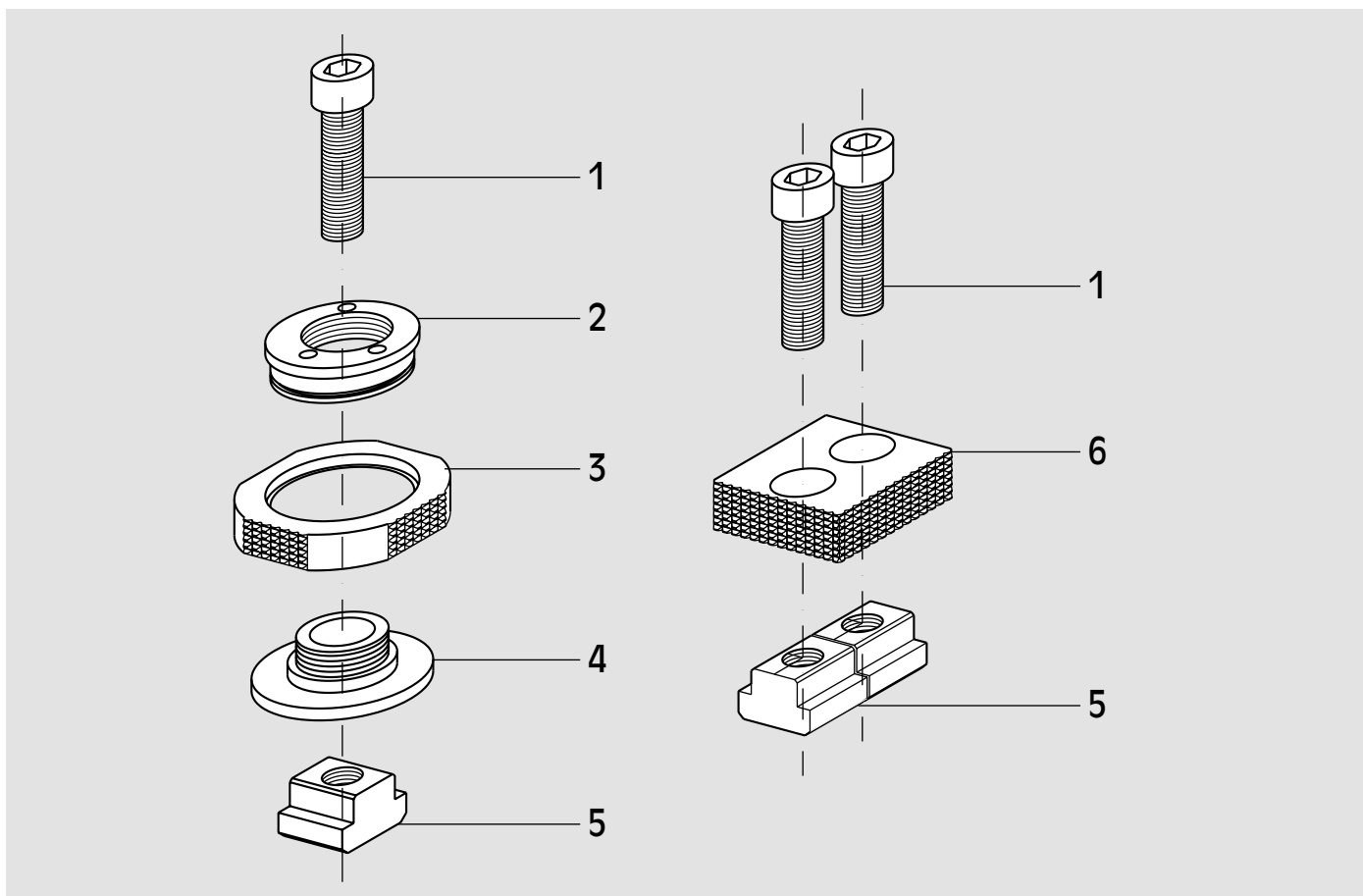
Eccentric self-locking clamping device



Set Cam SYSTEM "s" complete with:
 N. 4 CAM SYSTEM "s"
 N. 4 fixed block CAM SYSTEM "s"
 N. 6 pair of T-nuts with screw
 N. 1 Key for CAM SYSTEM "s"
 wooden packing case

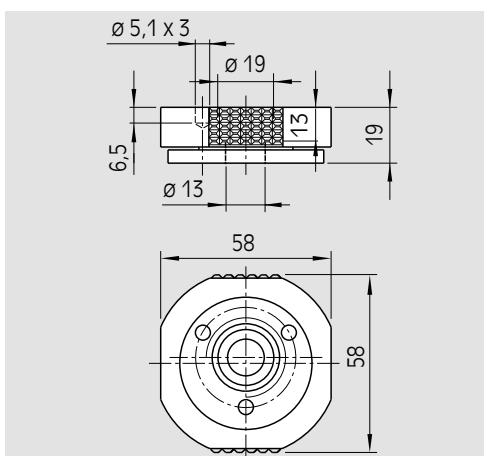


| Id. No. | T mm |
|----------|---------|
| 77584314 | 14 |
| 77584316 | 16 |
| 77584318 | 18 |
| 77584320 | 20 |
| 77584322 | 22 |



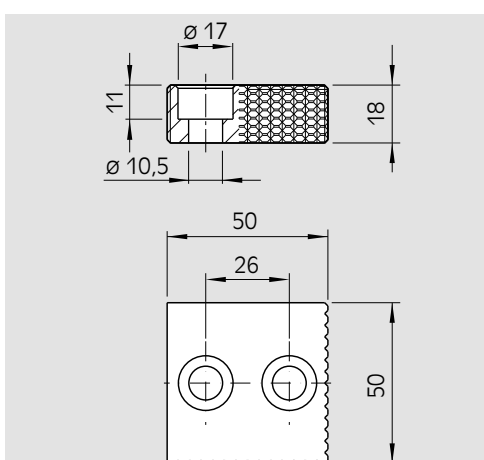
Description

| | | | | | |
|----|-------------------|----|------------------|----|-------------|
| 01 | Screw | 03 | Clamping element | 05 | T-nuts |
| 02 | Eccentric element | 04 | Central element | 06 | Fixed block |


CAM SYSTEM "s"
single

Id. No.

58435000


Fixed block
CAM SYSTEM "s"

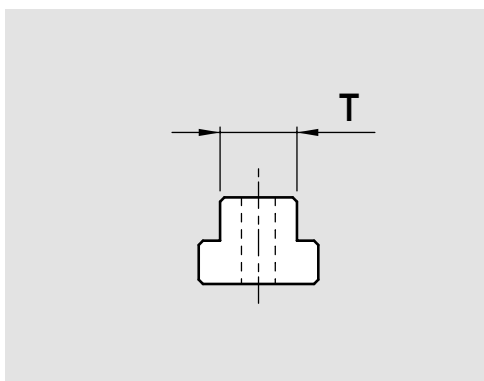
Id. No.

58430400

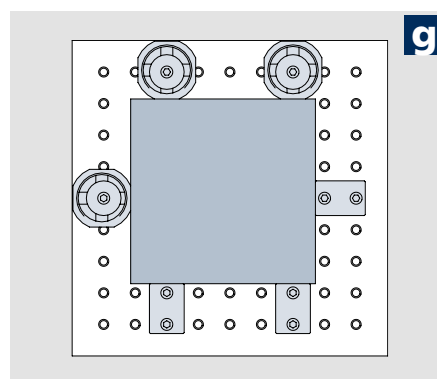
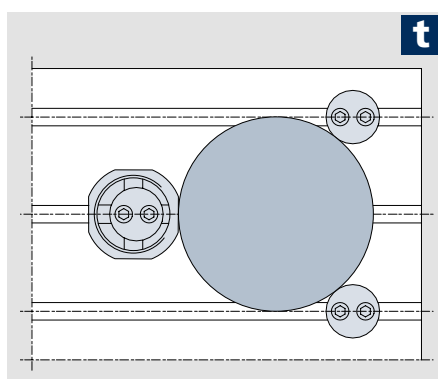
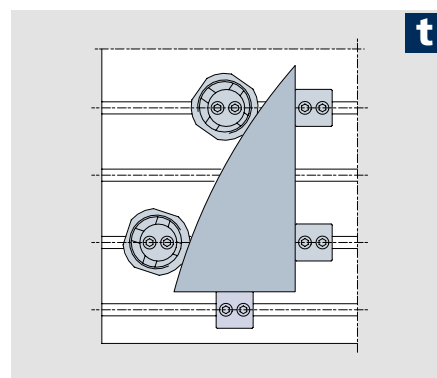
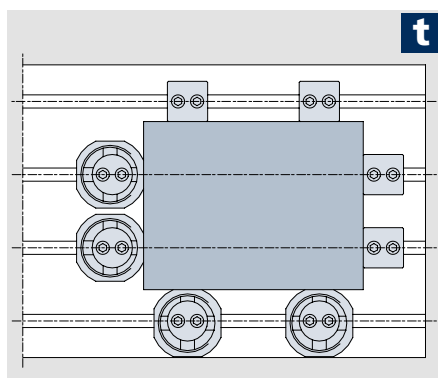
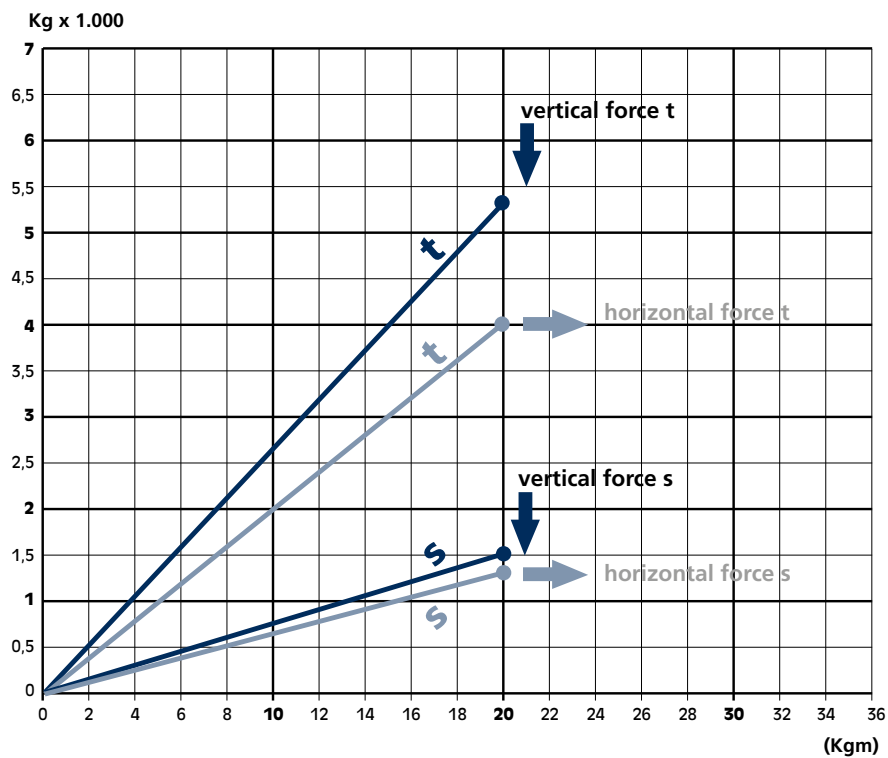

Key for
CAM SYSTEM "s"

Id. No.

58430800

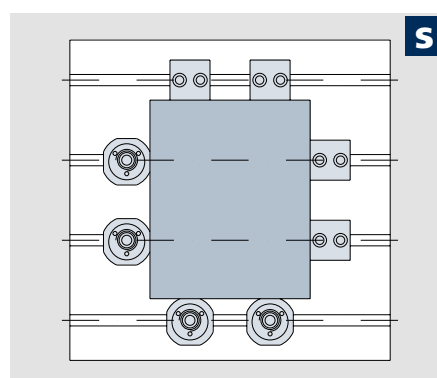

Pair of T-nuts
with screw
CAM SYSTEM "s"

| Id. No. | T mm |
|----------|---------|
| 58432593 | 14 |
| 58432594 | 16 |
| 58432595 | 18 |
| 58432596 | 20 |
| 58432597 | 22 |



S

| Id. No. | T mm |
|----------|---------|
| 77584414 | 14 |
| 77584416 | 16 |
| 77584418 | 18 |
| 77584420 | 20 |
| 77584422 | 22 |



EN



A COMPANY OF THE GROUP



OFFICINA MECCANICA LOMBARDA S.r.l.

Viale dell'Industria 6 - 27020 Trivulzio (PV) ITALY
Tel. +39 0382 93 00 00

E-mail ► omlspa@omlspa.it