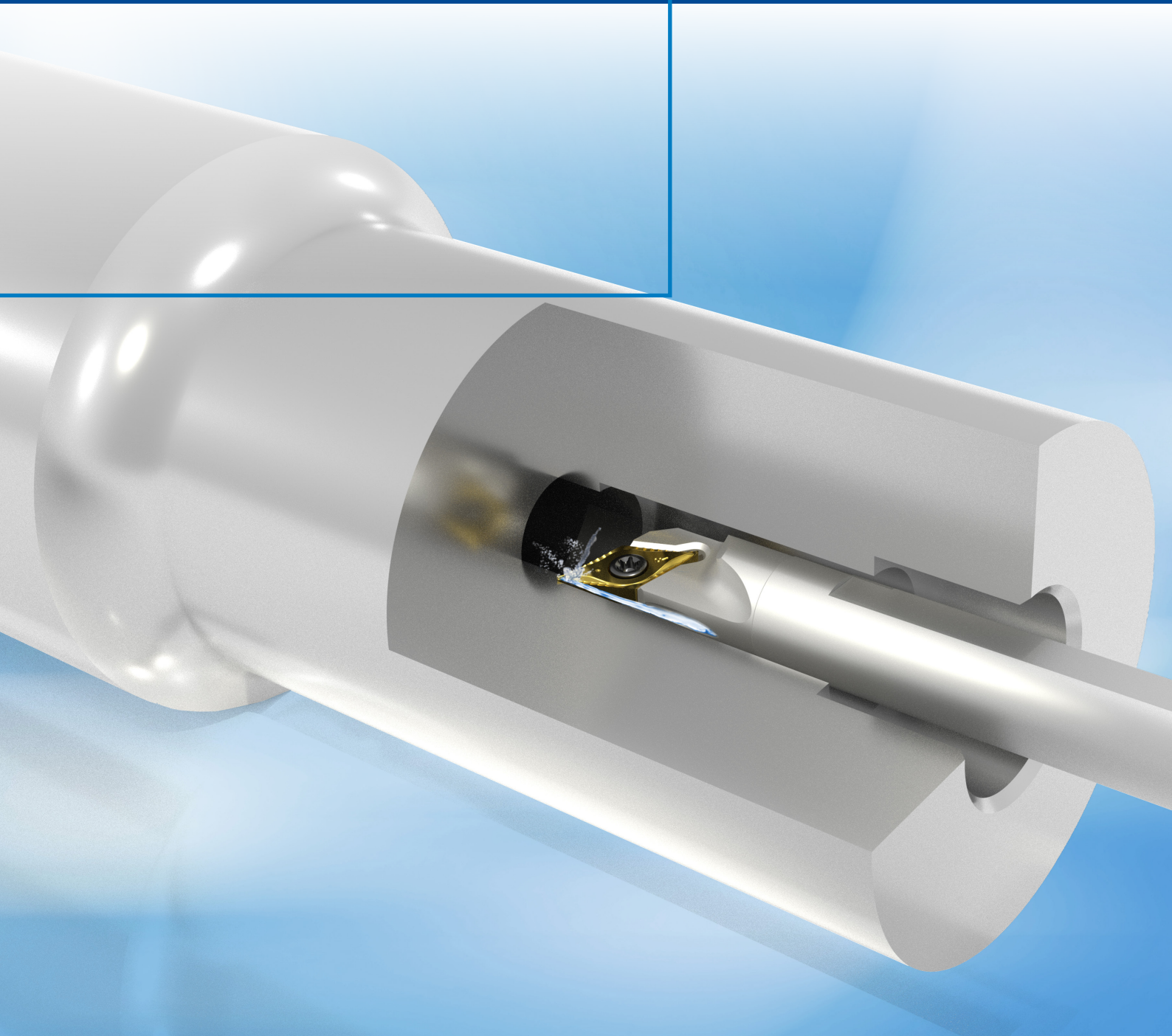


boehlerit

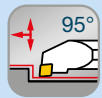
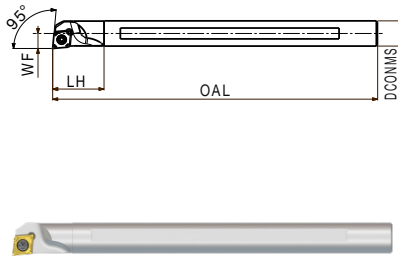
S-Klemmhalter
für die Innenbearbeitung mit
Innenkühlung

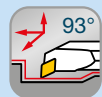
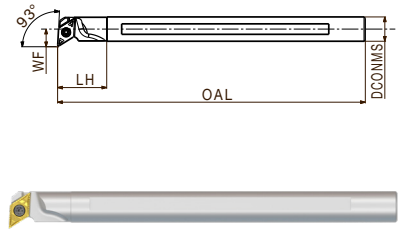
S-Tool holder
for internal machining with coolant


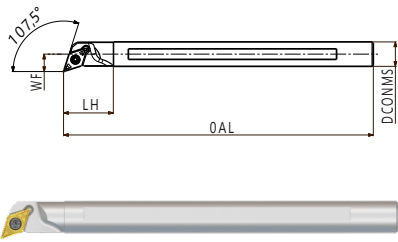


S-Klemmhalter für die Innenbearbeitung mit Innenkühlung
S-tool holder for internal machining with coolant

www.boehlerit.com

A-SCLCR/L		Artikelbezeichnung Item Code	Bestell-Nr. Order No.	DCONMS	OAL	LH	WF	DMIN	Verfügbarkeit Availability	Passende Wende- platten Suitable inserts
		A08H-SCLCL 06-IK	5221657	8	100	20	5	10	○	CC...0602..
		A10K-SCLCL 06-IK	5221664	10	125	20	6	12	○	
		A10K-SCLCL 06-IK	5221666	10	125	20	6	12	○	
		A12L-SCLCR 06-IK	5221678	12	140	24,2	7	14	○	
		A12L-SCLCL 06-IK	5221681	12	140	24,2	7	14	○	
		A16Q-SCLCR 09-IK	5221688	16	180	31	9	18	○	
		A16Q-SCLCL 09-IK	5221690	16	180	31	9	18	○	CC..09T3..
		A20R-SCLCR 09-IK	5221691	20	200	36	11	22	○	
		A20R-SCLCL 09-IK	5221693	20	200	36	11	22	○	
		A25R-SCLCR 09-IK	5221695	25	200	25	13,5	27	○	CC..1204..
		A25R-SCLCL 09-IK	5221697	25	200	25	13,5	27	○	
		A25R-SCLCR 12-K	5221698	25	200	25	13,5	27	○	
	A25R-SCLCL 12-IK	5221699	25	200	25	13,5	27	○		

A-SDUCR/L		Artikelbezeichnung Item Code	Bestell-Nr. Order No.	DCONMS	OAL	LH	WF	DMIN	Verfügbarkeit Availability	Passende Wende- platten Suitable inserts
		A10K-SDUCR 07-IK	5221700	10	125	20	7	13	○	DC..0702..
		A10K-SDUCL 07-IK	5221701	10	125	20	7	13	○	
		A12L-SDUCR 07-IK	5221702	12	140	25	8	15	○	
		A12L-SDUCL 07-IK	5221703	12	140	25	8	15	○	
		A16Q-SDUCR 07-IK	5221705	16	180	28	10	19	○	
		A16Q-SDUCL 07-IK	5221706	16	180	28	10	19	○	
		A16Q-SDUCR 11-IK	5221707	16	180	28	14	23	○	DC..11T3..
		A16Q-SDUCL 11-IK	5221708	16	180	28	14	23	○	
		A20R-SDUCR 11-IK	5221709	20	200	36	13	25	○	
		A20R-SDUCL 11-IK	5221710	20	200	36	13	25	○	
		A25R-SDUCR 11-IK	5221712	25	200	40	16	31	○	
		A25R-SDUCL 11-IK	5221713	25	200	40	16	31	○	

A-SDQCR/L		Artikelbezeichnung Item Code	Bestell-Nr. Order No.	DCONMS	OAL	LH	WF	DMIN	Verfügbarkeit Availability	Passende Wende- platten Suitable inserts
		A10K-SDQCR 07-IK	5221715	10	125	20	7	13	○	DC..0702..
		A10K-SDQCL 07-IK	5221716	10	125	20	7	13	○	
		A12L-SDQCR 07-IK	5221718	12	140	25	8	15	○	
		A12L-SDQCL 07-IK	5221720	12	140	25	8	15	○	
		A16Q-SDQCR 07-IK	5221723	16	180	28	10	19	○	
		A16Q-SDQCL 07-IK	5221724	16	180	28	10	19	○	
		A16Q-SDQCR 11-IK	5221725	16	180	28	14	23	○	DC..11T3..
		A16Q-SDQCL 11-IK	5221726	16	180	28	14	23	○	
		A20R-SDQCR 11-IK	5221728	20	200	36	13	25	○	
		A20R-SDQCL 11-IK	5221758	20	200	36	13	25	○	
		A25R-SDQCR 11-IK	5221759	25	200	40	16	31	○	
		A25R-SDQCL 11-IK	5221760	25	200	40	16	31	○	

Rechtsausführung wie gezeichnet, Linksausführung spiegelbildlich
 Righthand version as shown, lefthand version mirrorlike

Bestellbeispiel: 1 Stück 5221657 A08H-SCLCL 06-IK Order example: 1 piece 5221657 A08H-SCLCL 06-IK

Farbliche Abbildung der Werkzeuge und WSP müssen nicht dem Original entsprechen!
 Colours of the original tolls and inserts may deviate from the illustration!

○ kurzfristig lieferbar shortly available

S-Klemmhalter für die Innenbearbeitung mit Innenkühlung S-tool holder for internal machining with coolant

A-STFCR/L		Artikelbezeichnung Item Code	Bestell-Nr. Order No.	DCONMS	OAL	LH	WF	DMIN	Verfüg- barkeit Availa- bility	Passende Wende- platten Suitable inserts
		A10K-STFCR 11-IK	5221761	10	125	22	6	12	●	TC..1102..
		A10K-STFCL 11-IK	5221763	10	125	22	6	12	●	
		A12L-STFCR 11-IK	5221764	12	140	24,3	7	14	●	
		A12L-STFCL 11-IK	5221765	12	140	24,3	7	14	●	
		A16Q-STFCR 11-IK	5221766	16	180	31	9	18	●	
		A16Q-STFCL 11-IK	5221767	16	180	31	9	18	●	
		A20R-STFCR 11-IK	5221768	20	200	36	11	22	●	
		A20R-STFCL 11-IK	5221769	20	200	36	11	22	●	

A-SVUBR/L A-SVUCR/L		Artikelbezeichnung Item Code	Bestell Nr. Order No.	DCONMS	OAL	LH	WF	DMIN	Verfüg- barkeit Availa- bility	Passende Wende- platten Suitable inserts
		A25R-SVUBR 16-IK	5221779	25	200	40	17	31	●	VB..1604..
		A25R-SVUBL 16-IK	5221780	25	200	40	17	31	●	
		A16Q-SVUCR 11-IK	5221782	16	180	31	11	20	●	VC..1103..
		A16Q-SVUCL 11-IK	5221783	16	180	31	11	20	●	
		A20R-SVUCR 11-IK	5221784	20	200	36	13	24	●	
		A20R-SVUCL 11-IK	5221785	20	200	36	13	24	●	VC..1604..
		A25R-SVUCR 16-IK	5221786	25	200	40	17	31	●	
		A25R-SVUCL 16-IK	5221787	25	200	40	17	31	●	

A = Stahlschaft mit Kühlbohrung Steelshank with coolant hole

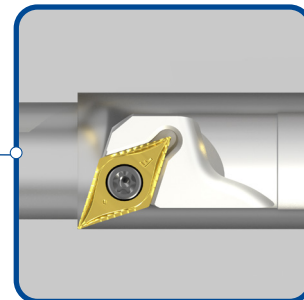
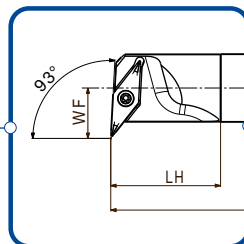
Bestellbeispiel: 1 Stück 5221761 A10K-STFCR 11 IK Order example: 1 piece 5221761 A10K-STFCR 11 IK

Ersatzteile Spare parts

Wendeplatte Indexable insert	Schaftdurchmesser Ø d Shank diameter length Ø d	Klemmschraube Fixation screw	Artikelbezeichnung Item Code	Ident Nr. Ident No.
CC..0602..	8 - 12		AP02-25051	5091691
CC..09T3..	16 - 25		AP02-40095	5085711
CC..1204..	25		AP02-50108	5112356
DC..0702..	10 - 16		AP02-25051	5091691
DC..11T3..	16 - 25		AP02-40095	5085711
TC..1102..	10 - 20		AP02-25051	5091691
VB..1604	25		AP02-40095	5085711
VC..1103..	16 - 20		AP02-25051	5091691
VC..1604..	25		AP02-40095	5085711

Optimiertes WF-Maß für kleinste
Mindestvorbohrdurchmesser

Optimised WF dimension for the
smallest minimum pre-drill diameter



Die dazugehörigen Wendschneidplatten finden Sie
in unserem Drehkatalog ab Seite 34 unter www.boehlerit.com

You can find the corresponding indexable inserts in our
turning catalogue starting page 34 under www.boehlerit.com

Boehlerit GmbH & Co. KG
Werk VI-Straße 100
8605 Kapfenberg
Österreich/Austria
Telefon +43 3862 300 - 0
Telefax +43 3862 300 - 793
sales-at@boehlerit.com
www.boehlerit.com

boehlerit

Vertriebstöchter und Repräsentanten *Subsidiaries and representatives*

Brasilien/Brazil

Boehlerit Brasil Ferramentas Ltda.
Rua Capricórnio 72
Alpha Conde I Comercial
06473-005 - Barueri -
São Paulo
Tel. +55 11 554 60 755
Fax +55 11 554 60 476
info@boehlerit.com.br
www.boehlerit.com.br

Deutschland/Germany

(Verschleiß/Wear parts)
Boehlerit GmbH & Co. KG
Heidenheimer Straße 108
D-73447 Oberkochen
Telefon +49 7364 950-700
bid@boehlerit.de
www.boehlerit.de

Indien/India

Boehlerit India
Otto Bilz Private Limited
No.5A-5B/6A,
KIADB Industrial Area
Doddaballapur-561 203
Bangalore District, Karnataka
Tel. +91 -080-22638700
www.boehlerit.com

Italien/Italy

Boehlerit Italy S.r.l.
Via Papa Giovanni XXIII, Nr. 45
20090 Rodano (MI)
Tel. +39 02 269 49 71
Fax +39 02 218 72 456
info@boehlerit.it
www.boehlerit.it

Mexiko/Mexico

Boehlerit S.A. de C.V.
Av. Acueducto No. 15
Parque Industrial Bernardo Quintana
El Marqués, Querétaro
México. C.P. 76246
Tel. +52 442 296 6804
info@boehlerit.com.mx
www.boehlerit.com.mx

Österreich/Austria

Boehlerit GmbH & Co. KG
Werk VI-Straße 100
8605 Kapfenberg
Österreich/Austria
Telefon +43 3862 300 - 0
Telefax +43 3862 300 - 793
sales-at@boehlerit.com
www.boehlerit.com

Polen/Poland

Boehlerit Polska sp.z.o.o.
Zlotniki, ul. Kobaltowa 6
62-002 Suchy Las
Zlotniki
Tel. +48 61 659 38 00
Fax +48 61 623 20 14
info@boehlerit.pl
www.boehlerit.pl

Slowakei/Slovakia

Kancelár Boehlerit
Kancelář Zlín
Santraziny 753
760 01 Zlín
Tel. +420 577 214 989
Fax +420 577 219 061
boehlerit@boehlerit.com
www.boehlerit.com

Spanien/Spain

Boehlerit Spain S.L.
C/. Narcis Monturiol 11-15
08339 Vilassar de Dalt Barcelona
Tel. +34 93 750 7907
Fax +34 93 750 7925
info@boehlerit.es
www.boehlerit.es

Tschechien/Czech Republic

Kancelár Boehlerit
Kancelář Zlín
Santraziny 753
760 01 Zlín
Tel. +420 577 214 989
Fax +420 577 219 061
info.cz@boehlerit.com
www.boehlerit.com

Türkei/Turkey

Boehlerit
Sert Metal ve Takım San. ve Tic. A.Ş.
Gosb 1600. Sok.No: 1602
41480 Gebze – Kocaeli
Tel. +90 262 677 17 37
Fax +90 262 677 17 46
info@boehlerit.com.tr
www.boehlerit.com.tr

Ungarn/Hungary

Boehlerit Hungária Kft.
2036 Érdliget Pf. 32
2030-Érd, Kis-Duna u.6.
Tel. +36 23 521 910
Fax +36 23 521 919
info@boehlerit.hu
www.boehlerit.hu

USA

Kanada/ Canada

Boehlerit USA
Bilz USA
1140 No.Main St.
Lombard IL 60148
Tel. +1 847 734 9390
Fax +1 847 734 9391
boehlerit@bilzusa.com
www.boehlerit.com