

LA GAMMA | THE RANGE

- **APPLICAZIONI IN FRESATURA**
MILLING APPLICATION
- **APPLICAZIONI IN RETTIFICA**
GRINDING APPLICATION
- **APPLICAZIONI IN TORNITURA**
TOURNING APPLICATION
- **SISTEMA MAGNETICO PER PRESSE
AD INIEZIONE PLASTICA**
MAGNETIC SYSTEM FOR INJECTION
MOLDING MACHINES
- **PRESSE A DEFORMAZIONE**
HYDRAULIC PRESSES FOR SHEET
METALFORMING
- **SOLLEVAMENTO A MAGNETI
PERMANENTI**
PERMANENT LIFTING MAGNETS
- **SOLLEVAMENTO A BATTERIA**
BATTERY POWERED LIFTING
- **SOLLEVAMENTO LAMIERE**
STEEL SHEET LIFTING
- **SOLLEVAMENTO BRAMME**
SLAB LIFTING
- **MOVIMENTAZIONE E AUTOMAZIONE**
HANDLING & AUTOMATION
- **DEMAGNETIZZATORI**
DEMAGNETIZERS

ELEMENTI DI STAFFAGGIO BULLONERIA VARIA

CLAMPING TOOLS / NUTS AND BOLTS



INDICE | INDEX

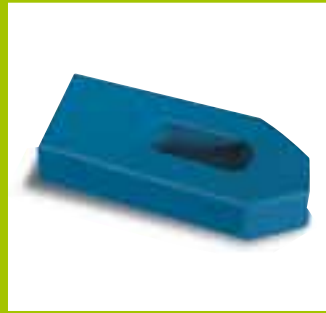
ELEMENTI DI STAFFAGGIO / CLAMPING TOOLS

Appoggi dentati Toothed supports	S110	05
Appoggi a vite Screw supports	S120 S121 - S122	05 06
Prolunghe Extension pieces	S125	07
Puntali Support caps	S151 - S152	07
Appoggi a vite pesanti Heavy screw supports	S130 - S131	08
Staffe Clamps	S210 - S211 S220 - S230 S240 - S250 S260 - S270 S280 - S281	09 10 11 12 13
Morsetti laterali Side buckles	ML10	14
Staffaggi assortiti Assorted clamping tools	S410	15
Appoggi dentati assortiti Assorted toothed support blocks	S440	16

BULLONERIA VARIA / NUTS AND BOLTS

Barre Bars	BF10-BF20	18
Viti Bolts	S310 S311 S312 S315 - S316	19 20 21 22
Prigionieri Studs	S320 S321 S5909-S5911-S5914-S5917	23 24-25 26
Dadi Nuts	S330 - S340 S350 - S351	27 28
Tasselli Slot nuts	S360 - S361 S362 - S363	29 30
Rondelle Washers	S370 - S380 - S390 S375C - S375D - S375G	31 32
Contenitori per viti Set of bolts	S420 S425 S430	33 34 35
Viti per torretta Turret bolts	VT10 - VT6050	36
Chiavi per torretta Turret keys	CA10 - CA20 CL10 - CP10 CP30 - CT10	37 38 39

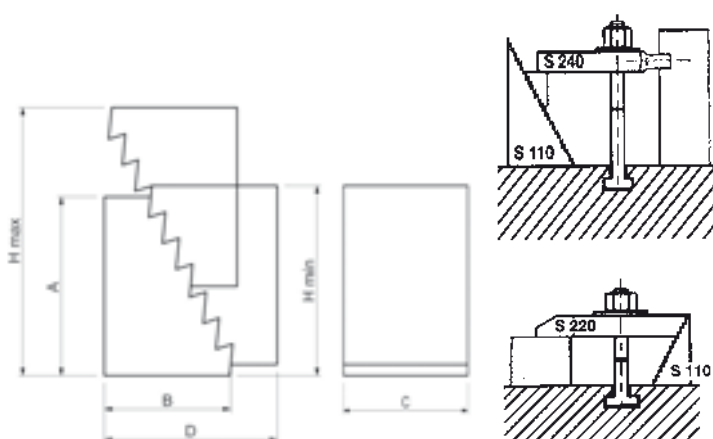
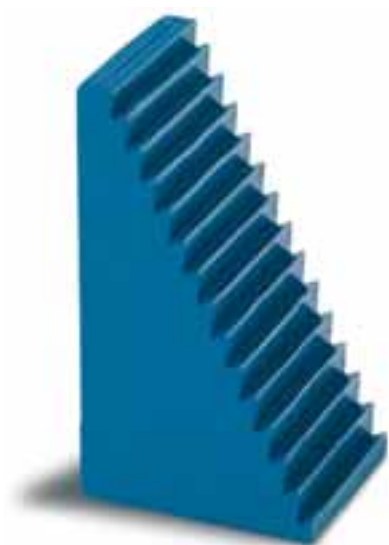
ELEMENTI DI STAFFAGGIO/ CLAMPING TOOLS



S110

NR. 6500E

APPOGGI DENTATI
TOOTHED SUPPORTS



Materiale: Acciaio da bonifica verniciato
Altezza gradino:
verticale 4,65 mm - orizzontale 2,3 mm.

Material: Hardening painted steel
Height of tooth:
vertical 4,65 mm - horizontal 2,3 mm.

Code	A	B	C	D	H _{min}	H _{max}	 gr
S110.00001	31,5	22	30	38	31,5	53	90
S110.00002	64,5	36,5	30	70	64,5	105	300
S110.00003	128	68	30	132	128	208	1050

Si eseguono su richiesta misure non a catalogo / Other sizes can be supplied on request.

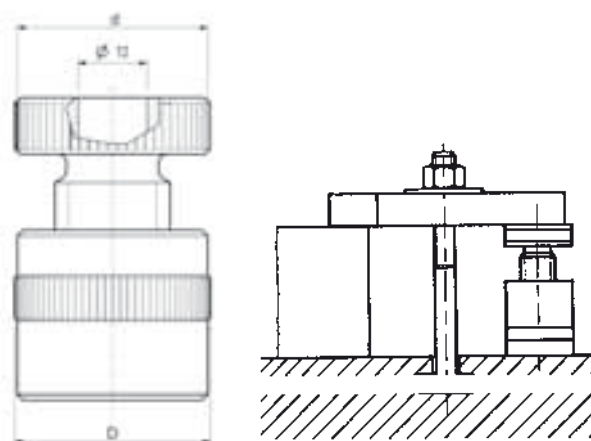
S120

NR. 6400

APPOGGI A VITE
SCREW SUPPORTS



N.B: S120.00050 senza foro



Materiale: Acciaio da bonifica verniciato.

Material: Hardening painted steel.

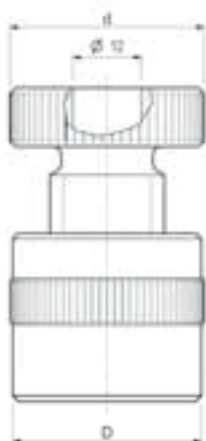
Code	H _{min}	H _{max}	d	D	F _{max} kN	gr	Passo
S120.00050	40	50	34	34	20	190	M20
S120.00070	54	70	50	50	60	620	M30
S120.00100	73	100	50	50	60	900	M30
S120.00140	100	140	65	70	105	2600	Q40x6
S120.00210	140	210	70	80	180	4900	Q50x6
S120.00300	190	300	80	100	360	10500	Q65x6

Si eseguono su richiesta misure non a catalogo / Other sizes can be supplied on request.

S121

NR. 6401


APPOGGI A VITE CON BASE IN ALLUMINIO
SCREW SUPPORTS WITH ALUMINIUM BASE



Possibilità di posizionamento e registrazione sia in verticale che in orizzontale.

Base - materiale: Lega in alluminio "ERGAL" EN 7075

Base - material: "ERGAL" aluminium alloy EN 7075

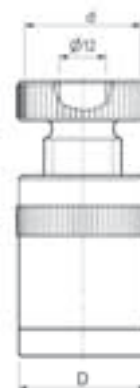
Code	H _{min}	H _{max}	d	D	F _{max} kN	
S121.00050	45	55	50	50	30	370
S121.00070	55	70	50	50	30	430
S121.00100	73	103	50	50	30	600

Si eseguono su richiesta misure non a catalogo / Other sizes can be supplied on request.

S122

NR. 6405

APPOGGI A VITE CON BASE MAGNETICA
SCREW SUPPORTS WITH MAGNETIC BASE




Possibilità di posizionamento e registrazione sia in verticale che in orizzontale.

Base - materiale: Lega in alluminio "ERGAL" EN 7075

The magnetic base allows this item to be used as an adjustable vertical or horizontal support.

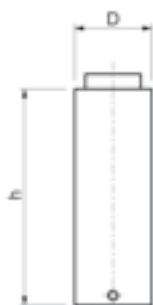
Base - material: "ERGAL" aluminium alloy EN 7075

Code	H _{min}	H _{max}	d	D	F _{max} kN	
S122.00050	57	67	50	50	30	380
S122.00070	67	82	50	50	30	550
S122.00100	85	115	50	50	30	710

Si eseguono su richiesta misure non a catalogo / Other sizes can be supplied on request.


S125

PROLUNGHE PER APPOGGI A VITE
EXTENSION PIECES FOR SCREW SUPPORTS



Utilizzato con l'articolo S120 permette di prolungare l'altezza dell'appoggio. Materiale: acciaio da bonifica verniciato. Possono essere sovrapposte.

Used with S120 give possibility to extend the length of the support. Material: Hardening painted steel. They should be placed one upon another.

Code	D	h	Per articolo	 gr
S125.35025	35	25	S120.00050	120
S125.35050	35	50	S120.00050	230
S125.35075	35	75	S120.00050	360
S125.35100	35	100	S120.00050	480
S125.50050	50	50	S120.00070/100	480
S125.50075	50	75	S120.00070/100	730
S125.50100	50	100	S120.00070/100	960
S125.50150	50	150	S120.00070/100	1450
S125.70050	70	50	S120.00140	1210
S125.70100	70	100	S120.00140	2400
S125.70150	70	150	S120.00140	3600
S125.70200	70	200	S120.00140	4800

Si eseguono su richiesta misure non a catalogo / Other sizes can be supplied on request.

S151

NR. 6440

PUNTALI BOMBATI
CONVEX CAPS



Utilizzati su S120-S121-S122-S130-S131.
Materiale: acciaio da bonifica brunito.

Used on article S120-S121-S122-S130-S131.
Material: Hardening blacked steel.

Code	A	B	C	D	d	gr
S151.00035	18	37	8	35	12	70

S152


NR. 6441

PUNTALI PRISMATICI
"V" GROOVE CAPS



Utilizzati su S120-S121-S122-S130-S131.
Materiale: acciaio da bonifica brunito.

Used on article S120-S121-S122-S130-S131.
Material: Hardening blacked steel

Code	A	B	C	D	d	 gr
S152.00045	23	32	8	45	12	145
S152.00065	38	56	8	65	12	580

Si eseguono su richiesta misure non a catalogo / Other sizes can be supplied on request.

S130

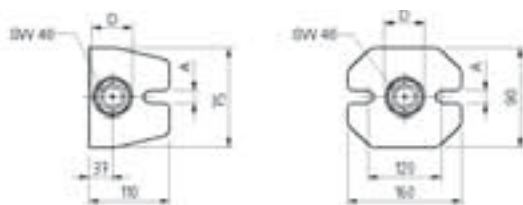
NR. 6430

APPOGGI A VITE "ATLAS"
SCREW SUPPORTS "ATLAS" TYPE



S130.18140
S130.18200

S130.22320
S130.22550



Filettatura trapezoidale passo 30x6.
Con vite di fermo.
Materiale: acciaio da bonifica verniciato.

Trapezoidal thread 30x6.
With stationary screw.
Material: Hardening painted steel.

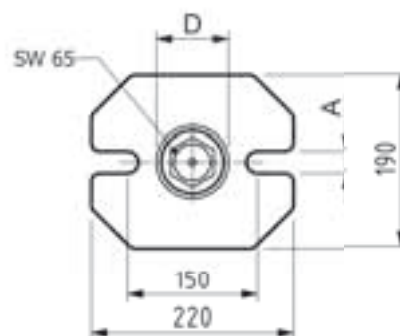
Code	H min	H max	A	D	F max kN	
S130.18140	100	140	18	50	60	1800
S130.18200	140	200	18	50	60	2300
S130.22320	200	320	22	50	40	3600
S130.22550	320	550	22	50	25	5500

Si eseguono su richiesta misure non a catalogo / Other sizes can be supplied on request.

S131


NR. 6435

APPOGGI A VITE TIPO PESANTE
SCREW SUPPORTS HEAVY TYPE



Filettatura trapezoidale passo 40x6.
Materiale: acciaio da bonifica verniciato.

Trapezoidal thread 40x6. Material: Hardening painted steel.

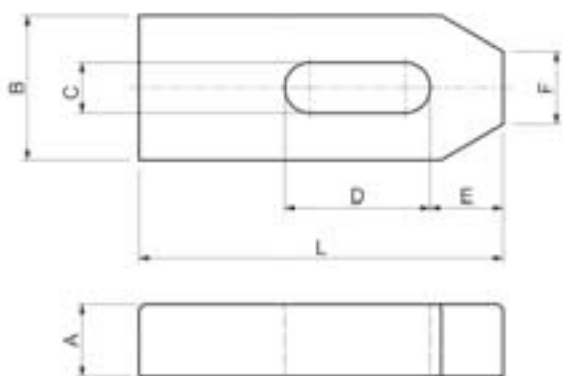
Code	H min	H max	A	D	F max kN	
S131.00300	200	300	26	70	80	9500
S131.00460	280	460	26	70	60	11000
S131.00750	430	750	26	70	50	13500
S131.01250	710	1250	26	70	45	19000

Si eseguono su richiesta misure non a catalogo / Other sizes can be supplied on request.

S210

DIN 6314

STAFFE SEMPLICI
STANDARD CLAMPS



Materiale: Acciaio da bonifica verniciato
R. > 700 N/mm².

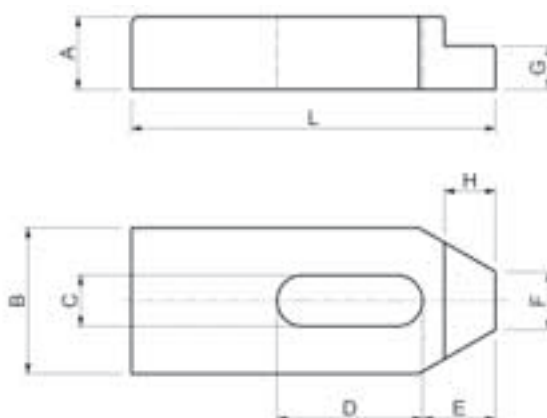
Material: Hardening painted steel
R. > 700 N/mm².

Code	A	B	L	C	D	E	F		
S210.07050	10	20	50	7	20	10	8	6	65
S210.09060	12	25	60	9	22	13	10	8	115
S210.11080	15	30	80	11	30	15	12	10	225
S210.14100	20	40	100	14	40	21	14	12-14	500
S210.14125	20	40	125	14	50	21	14	12-14	620
S210.14160	20	40	160	14	65	21	14	12-14	815
S210.18125	25	50	125	18	45	26	18	16-18	980
S210.18160	25	50	160	18	65	26	18	16-18	1260
S210.18200	25	50	200	18	80	26	18	16-18	1600
S210.22160	30	60	160	22	60	30	22	20-22	1850
S210.22200	30	60	200	22	80	30	22	20-22	2300
S210.26200	30	70	200	26	80	35	26	24	2650
S210.26250	30	70	250	26	105	35	26	24	3300
S210.34250	40	80	250	34	100	45	34	27-30	5000
S210.34315	40	80	315	34	130	45	34	27-30	6200

Si eseguono su richiesta misure non a catalogo / Other sizes can be supplied on request.

S211

STAFFE SEMPLICI RIDOTTE
SHAPED STANDARD CLAMPS



Materiale: Acciaio da bonifica verniciato
R. > 700 N/mm².

Material: Hardening painted steel
R. > 700 N/mm².

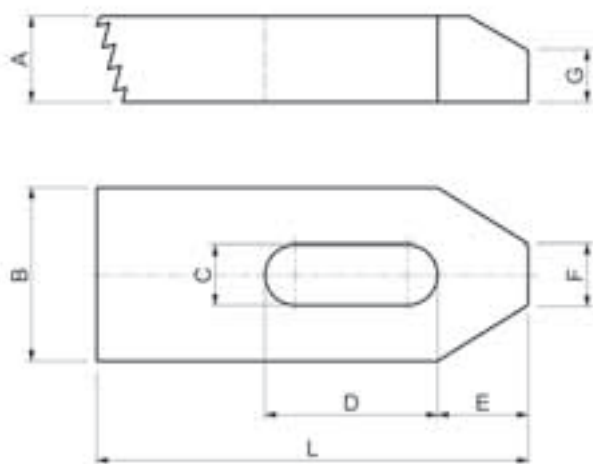
Code	G	A	B	L	C	D	E	F	H		
S211.07050	6	10	20	50	7	20	10	8	7	6	60
S211.09060	7	12	25	60	9	22	13	10	10	8	140
S211.11080	9	15	30	80	11	30	15	12	9	10	220
S211.14100	12	20	40	100	14	40	21	14	12	12-14	480
S211.14125	12	20	40	125	14	50	21	14	12	12-14	615
S211.14160	12	20	40	160	14	65	26	14	12	12-14	800
S211.18125	15	25	50	125	18	45	26	18	15	16-18	960
S211.18160	15	25	50	160	18	65	26	18	15	16-18	1230
S211.18200	15	25	50	200	18	80	26	18	15	16-18	1550
S211.22160	20	30	60	160	22	60	30	22	20	20-22	1800
S211.22200	20	30	60	200	22	80	30	22	20	20-22	2200
S211.26200	20	30	70	200	26	80	35	26	25	24	2450
S211.26250	20	30	70	250	26	105	35	26	25	24	3200
S211.34250	25	40	80	250	34	100	45	34	25	27-30	4800
S211.34315	25	40	80	315	34	130	45	34	25	27-30	6000

Si eseguono su richiesta misure non a catalogo / Other sizes can be supplied on request.

S220

NR. 6314Z

STAFFE DENTATE
TOOTHED CLAMPS



Materiale: Acciaio da bonifica verniciato
R. > 700 N/mm².

Material: Hardening painted steel
R. > 700 N/mm².

Code	A	B	L	C	D	E	F	G		
S220.07050	10	20	50	7	20	10	8	6	6	55
S220.09060	12	25	60	9	22	13	10	8	8	125
S220.11080	15	30	80	11	30	15	12	10	10	205
S220.14100	20	40	100	14	40	21	14	12	12-14	445
S220.18125	25	50	125	18	45	26	18	15	16-18	930
S220.22160	30	60	160	22	60	30	22	18	20-22	1700
S220.26200	30	70	200	26	80	35	26	18	24	2500

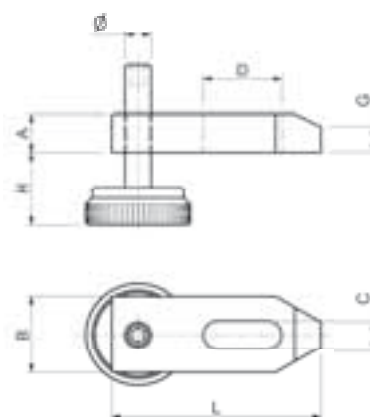
Si eseguono su richiesta misure non a catalogo / Other sizes can be supplied on request.

S230

NR. 6314V

STAFFE REGOLABILI CON VITE
FILETTATURA METRICA PASSO STANDARD

ADJUSTABLE CLAMPS WITH
METRIC STANDARD PITCH SCREW



Materiale: Acciaio da bonifica verniciato
R. > 700 N/mm².

Material: Hardening painted steel
R. > 700 N/mm².

Code	A	B	L	H	C	D	Ø	G		
S230.11080	15	30	80	15-45	11	30	M10	10	10	345
S230.14100	20	40	100	15-40	14	40	M12	12	12-14	680
S230.18125	25	50	125	15-45	18	45	M16	15	16-18	1185
S230.22160	30	60	160	15-50	22	60	M20	18	20-22	2030

VITI RICAMBIO (SPARE SCREWS)



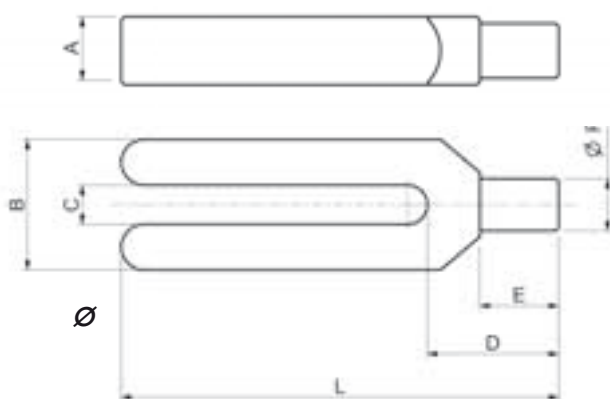
Code	A	B	L	H	
S231.00010	40	M10	60	15	150
S231.00012	45	M12	60	15	210
S231.00016	45	M16	70	15	245
S231.00020	45	M20	80	15	300

Si eseguono su richiesta misure non a catalogo / Other sizes can be supplied on request.

S240

DIN 6315C

STAFFE A FORCELLA CON GAMBO CILINDRICO
FORKED CLAMPS WITH CYLINDRICAL SHANK



Materiale: Acciaio da bonifica verniciato
R. > 600 N/mm².

Material: Hardening painted steel
R. > 600 N/mm².

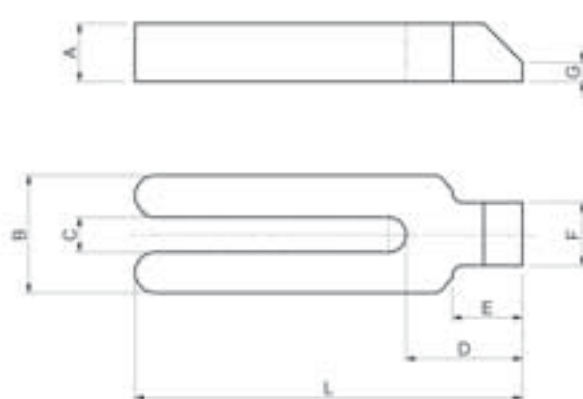
Code	A	B	L	C	D	E	F		
S240.09100	15	30	100	9	30	18	12	8	205
S240.11125	20	30	125	11	36	24	16	10	335
S240.14160	25	40	160	14	45	30	20	12-14	720
S240.14200	25	40	200	14	45	30	20	12-14	920
S240.18200	30	50	200	18	55	36	24	16-18	1310
S240.18250	30	50	250	18	55	36	24	16-18	1640
S240.22250	40	60	250	22	65	45	30	20-22	2610
S240.22315	40	60	315	22	65	45	30	20-22	3300
S240.26250	40	70	250	26	80	56	38	24	3100
S240.26315	40	70	315	26	80	56	38	24	3900
S240.34315	50	80	315	34	85	56	45	27-30	5500
S240.34400	50	80	400	34	85	56	45	27-30	6900

Si eseguono su richiesta misure non a catalogo / Other sizes can be supplied on request.

S250

NR. 6315GN

STAFFE A FORCELLA CON NASELLO
FORKED CLAMPS WITH NIB



Materiale: Acciaio da bonifica verniciato
R. > 600 N/mm².

Material: Hardening painted steel
R. > 600 N/mm².

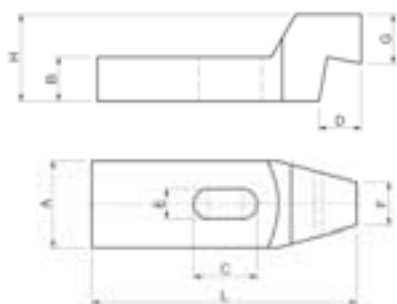
Code	A	B	L	C	D	E	F	G		
S250.09100	15	30	100	9	32	18	16	5	8	225
S250.11125	20	30	125	11	38	24	20	6	10	360
S250.14160	25	40	160	14	47	30	25	7	12-14	770
S250.14200	25	40	200	14	47	30	25	7	12-14	950
S250.18200	30	50	200	18	57	36	28	8	16-18	1420
S250.18250	30	50	250	18	57	36	28	8	16-18	1700
S250.22250	40	60	250	22	68	45	35	10	20-22	2790
S250.22315	40	60	315	22	68	45	35	10	20-22	3480
S250.26250	40	70	250	26	83	56	43	10	24	3320
S250.26315	40	70	315	26	83	56	43	10	24	4270
S250.34315	50	80	315	34	88	56	50	12	27-30	5700
S250.34400	50	80	400	34	88	56	50	12	27-30	7250

Si eseguono su richiesta misure non a catalogo / Other sizes can be supplied on request.

S260

DIN 6316

STAFFE A GOMITO
CRANKED CLAMPS



Il pregio dell'articolo sta nell'essere prodotto tramite la fresatura di un blocco d'acciaio (non è quindi piegato).

Materiale: acciaio da bonifica verniciato R. > 700 N/mm².

This article is produced milling a steel block (it is not produced by bending).

Material: Hardening painted steel R. > 700 N/mm².

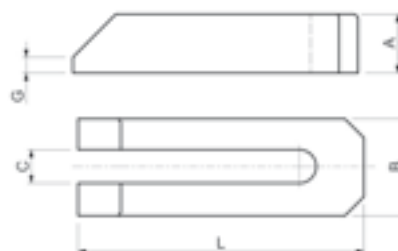
Code	A	B	L	C	E	D	F	G	H		
S260.14125	40	20	125	30	14	20	20	23	40	12-14	750
S260.18160	50	25	160	40	18	25	25	28	50	16-18	1510
S260.18200	50	25	200	60	18	25	25	28	50	16-18	1790
S260.22160	60	30	160	40	22	30	30	35	60	20-22	2190
S260.22200	60	30	200	60	22	30	30	35	60	20-22	2700
S260.26200	70	35	200	50	26	35	35	38	70	24	3660
S260.26250	70	35	250	75	26	35	35	38	70	24	4560

Si eseguono su richiesta misure non a catalogo / Other sizes can be supplied on request.

S270

DIN 6315B

STAFFE A FORCELLA CON SMUSSO
FORKED CLAMPS WITH BEVEL



Il pregio dell'articolo sta nell'essere prodotto tramite la fresatura di un blocco d'acciaio (non è quindi piegato).

Materiale: acciaio da bonifica verniciato R. > 600 N/mm².

This article is produced milling a steel block (it is not produced by bending).

Material: Hardening painted steel R. > 600 N/mm².

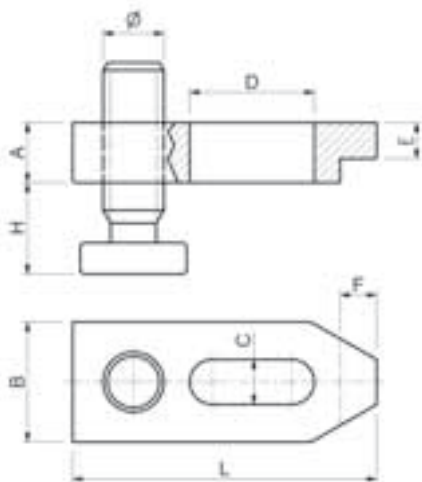
Code	A	B	L	C	G		
S270.07060	12	20	60	7	3	6	70
S270.09080	15	25	80	9	4	8	150
S270.11100	20	30	100	11	5	10	270
S270.14125	25	40	125	14	6	12-14	590
S270.14160	25	40	160	14	6	12-14	760
S270.14200	25	40	200	14	6	12-14	970
S270.18160	30	50	160	18	8	16-18	1160
S270.18200	30	50	200	18	8	16-18	1400
S270.18250	40	50	250	18	10	16-18	2330
S270.22200	40	50	200	22	10	20-22	1700
S270.22250	40	60	250	22	10	20-22	2880
S270.22315	40	60	315	22	10	20-22	3530
S270.26200	40	70	200	26	10	24	2680
S270.26250	40	70	250	26	10	24	3370
S270.26315	40	70	315	26	10	24	4220
S270.34250	50	80	250	34	12	27-30	4480
S270.34315	50	80	315	34	12	27-30	5600
S270.34400	50	80	400	34	12	27-30	7150
S270.40400	60	100	400	40	12	36	11700
S270.40600	60	100	600	40	12	36	17300

Si eseguono su richiesta misure non a catalogo / Other sizes can be supplied on request.

S280

NR. 6314AV

STAFFE REGOLABILI CON VITE PASSO QUADRO
ADJUSTABLE CLAMPS WITH SQUARE THREAD
SCREW



Materiale: Acciaio da bonifica verniciato
R. > 700 N/mm².

Material: Hardening painted steel
R. > 700 N/mm².

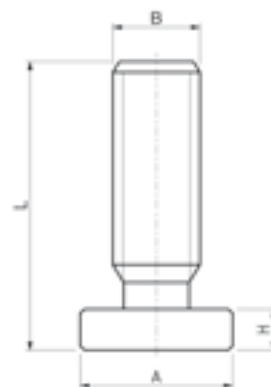
Code	A	B	L	H	C	D	Ø	E	F		
S280.14100	20	40	100	15-50	15	40	20x4	12	12	12-14	620
S280.14125	20	40	125	15-50	15	45	20x4	12	12	12-14	770
S280.14160	20	40	160	15-50	15	60	20x4	12	12	12-14	950
S280.18125	25	50	125	15-45	19	45	20x4	15	15	16-18	1090
S280.18160	25	50	160	15-75	19	60	30x6	15	15	16-18	1640
S280.18200	25	50	200	15-75	19	80	30x6	15	15	16-18	1970
S280.22160	30	60	160	15-70	23	60	30x6	15	20	20-22	2120
S280.22200	30	60	200	15-70	23	80	30x6	15	20	20-22	2570
S280.26200	40	70	200	15-85	27	80	30x6	25	23	24	3700
S280.26250	40	70	250	15-85	27	100	30x6	25	23	24	4620
S280.26300	40	70	300	15-85	27	100	30x6	25	23	24	5740

Si eseguono su richiesta misure non a catalogo / Other sizes can be supplied on request.

S281

NR. 6315GN

VITI DI RICAMBIO PER STAFFE
SPARE SCREWS FOR CLAMPS



Filetto TPN passo quadro.
Materiale: Acciaio automatico da bonifica

TPN thread square pitch
Material: Automatic alloy steel

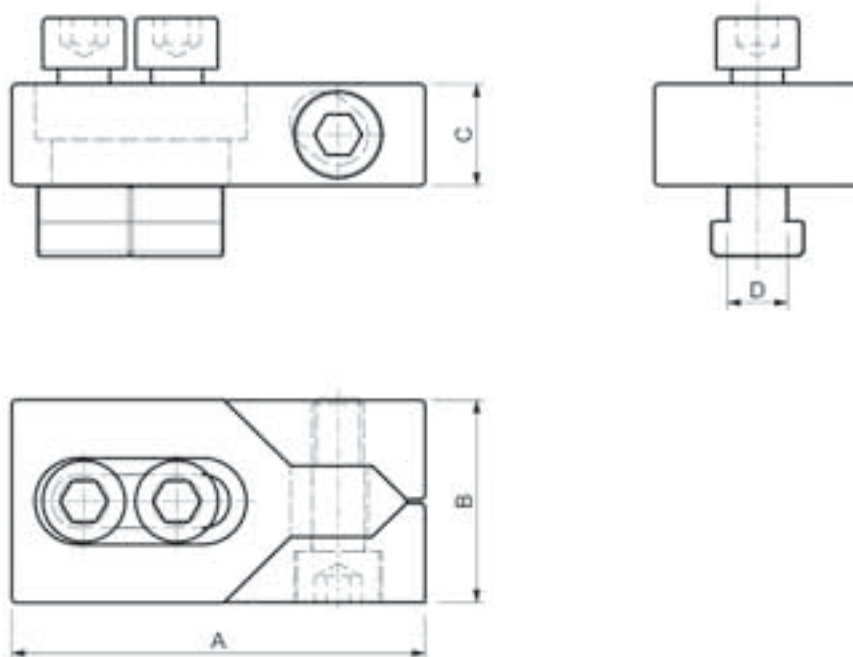
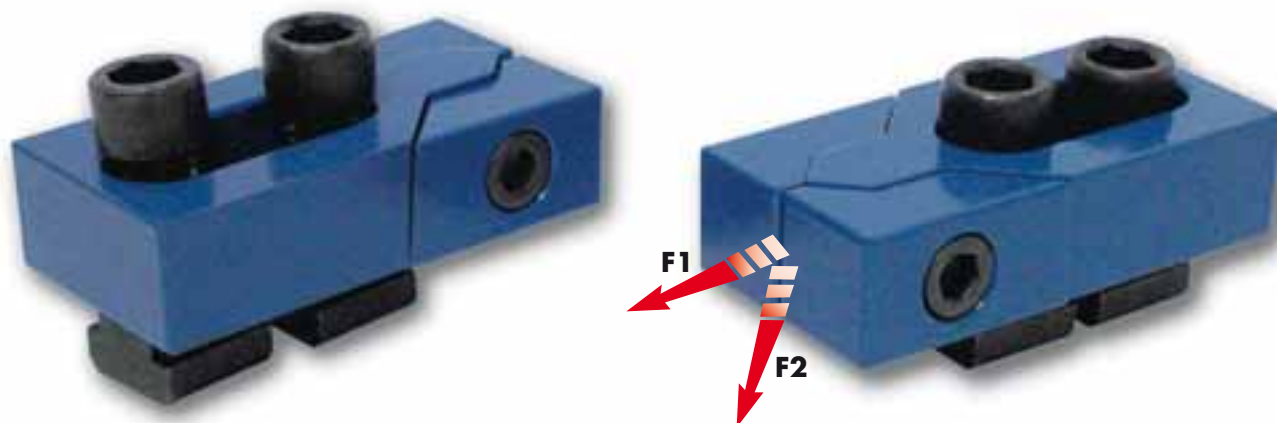
Code	A	B	L	H	
S281.20004	35	20x4	70	10	190
S281.20004	35	20x4	70	10	190
S281.20004	35	20x4	70	10	190
S281.20004	35	20x4	70	10	190
S281.30006	45	30x6	100	15	540
S281.30006	45	30x6	100	15	540
S281.30006	45	30x6	100	15	540
S281.30006	45	30x6	100	15	540
S281.30006.A	70	30x6	125	15	1050
S281.30006.A	70	30x6	125	15	1050
S281.30006.A	70	30x6	125	15	1050

Si eseguono su richiesta misure non a catalogo / Other sizes can be supplied on request.

ML10

NR. 6490

MORSETTI LATERALI SIDE BUCKLES



Materiale: acciaio da bonifica verniciato.
Costruzione a cuneo che permette il bloccaggio contemporaneo del pezzo in senso verticale ed orizzontale. Forniti in coppia.

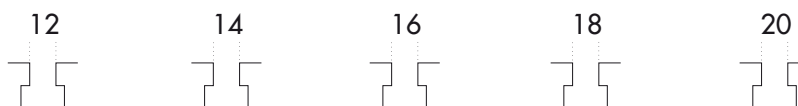
Material: hardening painted steel. Wedge type construction which enable to simultaneously clamp vertically and horizontally. Supplied in pairs.

Code	A	B	C	D		kN F1	kN F2	
ML10.00012	80	40	20	11,7	12	16	0,6	1,040
ML10.00014	80	40	20	13,7	14	22	0,9	1,070
ML10.00016	100	50	25	15,7	16	32	1,2	2,040
ML10.00018	100	50	25	17,7	18	36	1,4	2,080
ML10.00020	100	50	25	19,7	20	36	1,4	2,290
ML10.00022	140	78	30	21,7	22	36	1,4	5,530
ML10.00024	140	78	30	23,7	24	36	1,4	5,800
ML10.00028	140	78	30	27,7	28	40	1,6	6,200
ML10.00030	140	78	30	29,7	30	40	1,6	6,800

Si eseguono su richiesta misure non a catalogo / Other sizes can be supplied on request.

S410

STAFFAGGI ASSORTITI
ASSORTED CLAMPING TOOLS



Code	S410.00012	S410.00014	S410.00016	S410.00018	S410.00020	
Descrizione	Compos. <input type="checkbox"/>	Compos. <input type="checkbox"/>	Compos. <input type="checkbox"/>	Compos. <input type="checkbox"/>	Compos. <input type="checkbox"/>	Description
Appoggi dentati	S110.00001 2	S110.00001 2	S110.00001 2	S110.00001 2	S110.00001 2	Toothed supports
Appoggi dentati	S110.00002 4	S110.00002 4	S110.00002 4	S110.00002 4	S110.00002 4	Toothed supports
Appoggi dentati	S110.00003 2	S110.00003 2	S110.00003 2	S110.00003 2	S110.00003 2	Toothed supports
Staffe semplici	S210.14100 4	S210.14125 4	S210.18125 4	S210.18125 4	S210.22200 4	Flat clamps
Staffe dentate	S220.14100 4	S220.14100 4	S220.18125 4	S220.18125 4	S220.22160 4	Toothed clamps
Viti testa martello	S310.12080 2	S310.14100 2	S310.16100 4	S310.18150 4	S310.20150 4	T-slot bolts
Viti testa martello	S310.12125 4	S310.14150 4	S310.16150 2	S310.18200 2	S310.20200 2	T-slot bolts
Prigionieri completi	S320.10080 2	S320.12080 2	S320.14100 2	S320.16125 2	S320.18125 2	Studs
Prigionieri completi	S320.10100 2	S320.12160 2	S320.14160 2	S320.16160 2	S320.18160 2	Studs
Dadi prolung.	S350.10030 4	S350.12036 4	S350.14042 4	S350.16048 4	S350.18054 4	Extensions nuts
Dadi alti	S340.12018 6	S340.14021 6	S340.16024 6	S340.18027 6	S340.20030 6	Turned toll nuts
Tasselli per cave	S360.10012 4	S360.12014 4	S360.14016 4	S360.16018 4	S360.18020 4	T-slot nuts
Rondelle	S370.00012 6	S370.00014 6	S370.00016 6	S370.00018 6	S370.00020 6	Washers
Peso kg	10,5	12	17	18	27	Weight kg.
Cassetta in legno vuota	S410.BOX01		S410.BOX02		S410.BOX03	Wooden box
Dimensioni	cm. 37x32		cm. 47x33		cm. 50x41	Sizes

Si eseguono su richiesta misure non a catalogo / Other sizes can be supplied on request.

S440

APPOGGI DENTATI ASSORTITI

ASSORTED TOOTHED SUPPORT BLOCKS



S440.00001

COMPOS.



S110.00001

8

S110.00002

8

S110.00003

4

Peso/Weight

Kg 8,5

dim.

cm 30,5x17

Si eseguono su richiesta misure non a catalogo / Other sizes can be supplied on request.

BULLONERIA VARIA/ NUTS AND BOLTS



BF10

BARRE FILETTATE
THREADED BARS



BF20

BARRE FILETTATE INOX
STAINLESS STEEL THREADED BARS




Su richiesta anche sinistre
On request also left-hand threaded



Materiale: 42CrMoS4 Classe 10.9
Filetto ottenuto per rullatura.


Material: 42CrMoS4 Class 10.9
Rolled thread.

Code	D	L	
BF10.00006	M6	1000	0,200
BF10.00008	M8	1000	0,350
BF10.00010	M10	1000	0,550
BF10.00012	M12	1000	0,800
BF10.00014	M14	1000	1,000
BF10.00016	M16	1000	1,300
BF10.00018	M18	1000	1,600
BF10.00020	M20	1000	2,100
BF10.00022	M22	1000	2,600
BF10.00024	M24	1000	3,000
BF10.00027	M27	1000	3,900
BF10.00030	M30	1000	5,000
BF10.00033	M33	1000	6,000
BF10.00036	M36	1000	6,900
BF10.00042	M42	1000	9,300
BF10.00048	M48	1000	12,200

Si eseguono su richiesta misure non a catalogo / Other sizes can be supplied on request.

Materiale: acciaio inox AISI 304 Classe A2
Filetto ottenuto per rullatura.

Material: stainless steel AISI 304 Class A2.
Rolled thread.

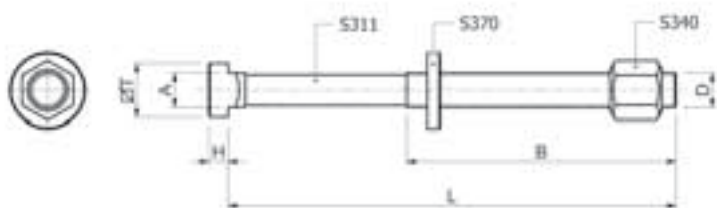
Code	D	L	
BF20.00006	M6	1000	0,200
BF20.00008	M8	1000	0,350
BF20.00010	M10	1000	0,550
BF20.00012	M12	1000	0,800
BF20.00014	M14	1000	1,000
BF20.00016	M16	1000	1,300
BF20.00018	M18	1000	1,600
BF20.00020	M20	1000	2,100
BF20.00022	M22	1000	2,600
BF20.00024	M24	1000	3,000
BF20.00027	M27	1000	3,900
BF20.00030	M30	1000	5,000
BF20.00036	M36	1000	6,900

Si eseguono su richiesta misure non a catalogo / Other sizes can be supplied on request.

Su richiesta è disponibile la fornitura dell'attestato di controllo 2.2 e del certificato 3.1.B. / On demand it is available the supply of certificates 2.2 and 3.1.B.

S310

VITI TESTA A MARTELLO COMPLETE DI DADO S340 E RONDELLA S370 HAMMERHEAD BOLTS COMPLETE WITH NUT S340 AND WASHER S370



Materiale: 42CrMoS4 Classe 10.9. Filetto ottenuto per rullatura

Material: 42CrMoS4 Class 10.9. Rolled thread

Code	D	L	B	A	T	H			gr
S310.10040	M10	40	30	9,7	15	6	10		60
S310.10060		63	45						80
S310.10080		80	55						85
S310.10100		100	60						100
S310.10125		125	75						105
S310.10150		150	100						120
S310.10170		170	100						130
S310.12050	M12	50	35	11,7	18	7	12		110
S310.12060		63	45						115
S310.12080		80	55						125
S310.12100		100	60						140
S310.12125		125	75						150
S310.12150		150	100						180
S310.12170		170	100						195
S310.12200		200	120						210
S310.14060	M14	63	40	13,7	22	8	14		160
S310.14080		80	55						180
S310.14100		100	65						215
S310.14125		125	75						240
S310.14150		150	100						270
S310.14170		170	100						290
S310.14200		200	125						315
S310.14230		230	150						345
S310.16060	M16	63	45	15,7	25	9	16		230
S310.16080		80	55						250
S310.16100		100	63						270
S310.16125		125	75						315
S310.16150		150	100						345
S310.16160		160	100						360
S310.16170		170	100						370
S310.16200		200	125						405
S310.16230		230	150						450
S310.16250		250	150						470

Si eseguono su richiesta misure non a catalogo / Other sizes can be supplied on request.

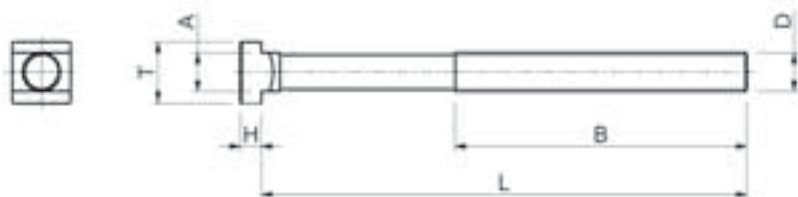
Code	D	L	B	A	T	H			gr
S310.18080	M18	80	55	17,7	28	10	18		315
S310.18100		100	65						335
S310.18125		125	85						410
S310.18150		150	100						450
S310.18170		170	100						480
S310.18200		200	125						530
S310.18230		230	150						560
S310.20080	M20	80	55	19,7	32	12	20		440
S310.20100		100	63						490
S310.20125		125	85						540
S310.20150		150	100						600
S310.20160		160	110						620
S310.20170		170	100						625
S310.20200		200	125						700
S310.20230		230	150						820
S310.20315		315	190						950
S310.22080	M22	80	55	21,7	35	14	22		540
S310.22100		100	63						580
S310.22125		125	85						630
S310.22150		150	100						710
S310.22170		170	100						790
S310.22200		200	125						870
S310.22230		230	150						890
S310.24080	M24	80	55	23,7	40	16	24		720
S310.24100		100	70						810
S310.24125		125	85						870
S310.24150		150	100						980
S310.24160		160	110						1010
S310.24170		170	100						1040
S310.24200		200	125						1170
S310.24230		230	150						1220
S310.24250		250	150						1230
S310.27160	M27	160	110	27,7	44	18	28		1170
S310.27200		200	125						1320
S310.27250		250	150						1490
S310.27315		315	240						1860

Si eseguono su richiesta misure non a catalogo / Other sizes can be supplied on request.



Su richiesta è disponibile la fornitura dell'attestato di controllo 2.2 e del certificato 3.1.B. / On demand it is available the supply of certificates 2.2 and 3.1.B.

S311

VITI TESTA A MARTELLLO SINGOLE SINGLE HAMMERHEAD BOLTS





Materiale: 42CrMoS4 Classe 10.9 Filetto ottenuto per rullatura

Code	D	L	B	A	T	H		
S311.10040	M10	40	30	9,7	15	6	10	30
S311.10060		63	45					50
S311.10080		80	55					55
S311.10100		100	60					70
S311.10125		125	75					75
S311.10150		150	100					90
S311.10170		170	100					100
S311.12050	M12	50	35	11,7	18	7	12	60
S311.12060		63	45					65
S311.12080		80	55					75
S311.12100		100	60					90
S311.12125		125	75					110
S311.12150		150	100					130
S311.12170		170	100					145
S311.12200		200	120					160
S311.14060	M14	63	40	13,7	22	8	14	80
S311.14080		80	55					100
S311.14100		100	65					135
S311.14125		125	75					160
S311.14150		150	100					190
S311.14170		170	100					210
S311.14200		200	125					235
S311.14230		230	150					265
S311.16060	M16	63	45	15,7	25	9	16	140
S311.16080		80	55					160
S311.16100		100	63					180
S311.16125		125	75					225
S311.16150		150	100					255
S311.16160		160	100					270
S311.16170		170	100					280
S311.16200		200	125					315
S311.16230		230	150					360
S311.16250		250	150					380

Si eseguono su richiesta misure non a catalogo / Other sizes can be supplied on request.

Material: 42CrMoS4 Class 10.9 Rolled thread

Code	D	L	B	A	T	H		
S311.18080	M18	80	55	17,7	28	10	18	185
S311.18100		100	65					203
S311.18125		125	85					280
S311.18150		150	100					320
S311.18170		170	100					350
S311.18200		200	125					400
S311.18230		230	150					430
S311.20080	M20	80	55	19,7	32	12	20	290
S311.20100		100	63					340
S311.20125		125	85					390
S311.20150		150	100					450
S311.20160		160	110					470
S311.20170		170	100					475
S311.20200		200	125					550
S311.20230		230	150					670
S311.20315		315	190					800
S311.22080	M22	80	55	21,7	35	14	22	330
S311.22100		100	63					370
S311.22125		125	85					430
S311.22150		150	100					500
S311.22170		170	100					590
S311.22200		200	125					660
S311.22230		230	150					680
S311.24080	M24	80	55	23,7	40	16	24	450
S311.24100		100	70					550
S311.24125		125	85					600
S311.24150		150	100					710
S311.24160		160	110					740
S311.24170		170	100					770
S311.24200		200	125					900
S311.24230		230	150					935
S311.24250		250	150					995
S311.27160	M27	160	110	27,7	44	18	28	800
S311.27200		200	125					950
S311.27250		250	150					1120
S311.27315		315	240					1490

Si eseguono su richiesta misure non a catalogo / Other sizes can be supplied on request.



Su richiesta è disponibile la fornitura dell'attestato di controllo 2.2 e del certificato 3.1.B. / On demand it is available the supply of certificates 2.2 and 3.1.B.

S312

VITI TESTA A MARTELLO SINGOLE TESTA MAGGIORATA SINGLE HAMMERHEAD BOLTS INCREASED HEAD





Materiale: 42CrMoS4 Classe 10.9. Filetto ottenuto per rullatura

Code	D	L	B	A	T	H		
S312.16090	M16	93	55	15,7	28	12	16	170
S312.16120		120	75					220
S312.16150		150	100					255
S312.16200		200	125					315
S312.16225		225	160					355
S312.16250		250	160					380
S312.16300		300	180					460

Si eseguono su richiesta misure non a catalogo / Other sizes can be supplied on request.

Material: 42CrMoS4 Class 10.9. Rolled thread

Code	D	L	B	A	T	H		
S312.18120	M18	120	75	17,7	35	14	18	270
S312.18150		150	100					320
S312.18200		200	125					400
S312.18225		225	150					420
S312.18250		250	150					470
S312.18300		300	190					565
S312.20120	M20	120	75	19,7	40	16	20	375
S312.20150		150	100					450
S312.20200		200	125					550
S312.20225		225	150					655
S312.20250		250	150					730
S312.20300		300	190					765
S312.24120	M24	120	75	23,7	44	20	24	580
S312.24150		150	100					710
S312.24200		200	125					900
S312.24225		225	150					915
S312.24250		250	150					995
S312.24300		300	190					1200

Si eseguono su richiesta misure non a catalogo / Other sizes can be supplied on request.

Su richiesta è disponibile la fornitura dell'attestato di controllo 2.2 e del certificato 3.1.B. / On demand it is available the supply of certificates 2.2 and 3.1.B.

S315

VITI TESTA A MARTELLO COMPLETE DI DADO S340 E RONDELLA S390

HAMMERHEAD BOLTS COMPLETE WITH NUT S340 AND WASHER S390

Cava maggiorata

Materiale: 42CrMoS4 Classe 10.9. Filetto ottenuto per rullatura.

Increased slot

Material: 42CrMoS4 Class 10.9. Rolled thread.



Code	D	L	B	A	T	H		
S315.12050	M12	50	35	13,7	22	8	14	145
S315.12063		63	45					150
S315.12080		80	55					165
S315.12125		125	75					185
S315.12200		200	120					245
S315.14063	M14	63	45	15,7	25	9	16	210
S315.14100		100	63					245
S315.14160		160	100					305
S315.14230		230	150					370
S315.16063	M16	63	45	17,7	28	10	18	290
S315.16080		80	55					315
S315.16100		100	63					335
S315.16125		125	85					380
S315.16160		160	100					410
S315.16200		200	125					475
S315.16230		230	150					520
S315.16250		250	150					560
S315.20080	M20	80	55	21,7	35	14	22	515
S315.20100		100	63					565
S315.20125		125	85					615
S315.20160		160	110					675
S315.20200		200	125					755
S315.20230		230	150					830
S315.20315		315	190					1010
S315.24100	M24	100	70	27,7	44	18	28	1020
S315.24125		125	85					1110
S315.24160		160	110					1170
S315.24200		200	125					1320
S315.24230		230	150					1430
S315.24250		250	150					1490
S315.24315		315	240					1860
S315.30125	M30	125	80	35,7	53	22	36	1860
S315.30160		160	110					1940
S315.30200		200	134					2120
S315.30250		250	149					2360
S315.30315		315	190					2670

Si eseguono su richiesta misure non a catalogo / Other sizes can be supplied on request.

S316

DIN 787

VITI TESTA A MARTELLO SINGOLE SINGLE HAMMERHEAD BOLTS

Cava maggiorata

Materiale: 42CrMoS4 Classe 10.9. Filetto ottenuto per rullatura.

Increased slot

Material: 42CrMoS4 Class 10.9. Rolled thread.

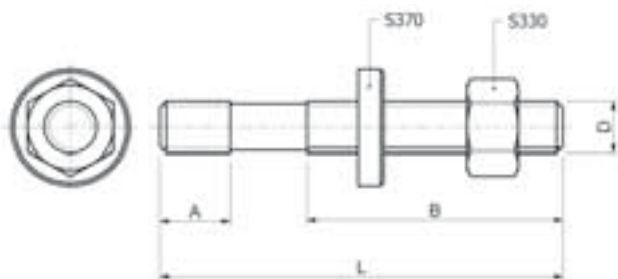


Code	D	L	B	A	T	H		
S316.12050	M12	50	35	13,7	22	8	14	80
S316.12063		63	45					85
S316.12080		80	55					100
S316.12125		125	75					120
S316.12200		200	120					180
S316.14063	M14	63	45	15,7	25	9	16	125
S316.14100		100	63					160
S316.14160		160	100					220
S316.14230		230	150					285
S316.16063	M16	63	45	17,7	28	10	18	160
S316.16080		80	55					185
S316.16100		100	63					205
S316.16125		125	85					250
S316.16160		160	100					280
S316.16200		200	125					345
S316.16230		230	150					390
S316.16250		250	150					430
S316.20080	M20	80	55	21,7	35	14	22	330
S316.20100		100	63					380
S316.20125		125	85					430
S316.20160		160	110					490
S316.20200		200	125					570
S316.20230		230	150					645
S316.20315		315	190					820
S316.24100	M24	100	70	27,7	44	18	28	650
S316.24125		125	85					740
S316.24160		160	110					800
S316.24200		200	125					950
S316.24230		230	150					1060
S316.24250		250	150					1120
S316.24315		315	240					1490
S316.30125	M30	125	80	35,7	53	22	36	1250
S316.30160		160	110					1300
S316.30200		200	134					1480
S316.30250		250	149					1720
S316.30315		315	190					2030

Si eseguono su richiesta misure non a catalogo / Other sizes can be supplied on request.


S320


PRIGIONIERI COMPLETI DI DADO S330 E RONDELLA S370 STUDS COMPLETE WITH SHORT NUT S330 AND WASHER S370




Materiale: 42CrMoS4 Classe 10.9. Filetto ottenuto per rullatura.
Diametro medio sulla parte non filettata.

Material: 42CrMoS4 Class 10.9. Rolled thread.
Average diameter on the non-threaded part.

Code	D	L	A	B	
S320.08040	M8	40	11	20	25
S320.08060		63		40	35
S320.08080		80		50	40
S320.08100		100		63	45
S320.08125		125		75	50
S320.08160		160		100	60
S320.08200		200		100	80
S320.10050	M10	50	13	25	50
S320.10060		63		35	55
S320.10080		80		50	65
S320.10100		100		75	75
S320.10120		120		75	85
S320.10160		160		100	105
S320.10200		200		125	125
S320.12050	M12	50	15	25	80
S320.12060		63		32	85
S320.12080		80		50	95
S320.12100		100		63	110
S320.12125		125		75	130
S320.12160		160		100	155
S320.12200		200		125	180
S320.12225		225		160	205
S320.12250		250		160	220
S320.14060	M14	63	17	32	145
S320.14080		80		50	150
S320.14100		100		63	160
S320.14120		120		75	185
S320.14160		160		100	215
S320.14200		200		125	260
S320.14225		225		160	290
S320.14250		250		160	305

Code	D	L	A	B	
S320.16065	M16	63	19	35	160
S320.16080		80		50	180
S320.16100		100		63	205
S320.16125		125		75	235
S320.16160		160		100	295
S320.16200		200		125	355
S320.16225		225		160	370
S320.16250		250		160	400
S320.16315		315		180	500
S320.18080	M18	80	23	50	230
S320.18100		100		50	265
S320.18125		125		75	300
S320.18160		160		100	355
S320.18200		200		125	420
S320.18225		225		150	465
S320.18250		250		150	500
S320.18315		315		180	600
S320.20080	M20	80	27	30	305
S320.20100		100		50	325
S320.20125		125		70	375
S320.20160		160		100	450
S320.20200		200		125	530
S320.20225		225		160	585
S320.20250		250		160	630
S320.20315		315		195	760
S320.22100	M22	100	31	45	440
S320.22120		120		63	470
S320.22160		160		100	600
S320.22200		200		125	670
S320.22225		225		160	740
S320.22250		250		160	840
S320.22315		315		180	920

Code	D	L	A	B	
S320.24100	M24	100	35	45	490
S320.24125		125		70	580
S320.24160		160		100	670
S320.24200		200		125	780
S320.24225		225		125	870
S320.24250		250		160	930
S320.24315		315		180	1120
S320.27125	M27	125	39	56	785
S320.27150		150		80	870
S320.27200		195		125	1070
S320.27225		225		160	1160
S320.27250		250		160	1260
S320.27315		315		195	1410
S320.27400		400		250	1835
S320.27500		500		315	2230
S320.30125	M30	125	43	56	960
S320.30150		150		80	1080
S320.30200		195		125	1320
S320.30250		250		160	1550
S320.30315		315		195	1860
S320.30400		400		250	2250
S320.30500		500		315	2730
S320.30700		700		400	3670
S320.36160	M36	160	51	80	1725
S320.36200		200		125	1965
S320.36250		250		160	2335
S320.36315		315		195	2775
S320.36400		400		250	3365
S320.36500		500		315	4165
S320.36700		700		400	5405

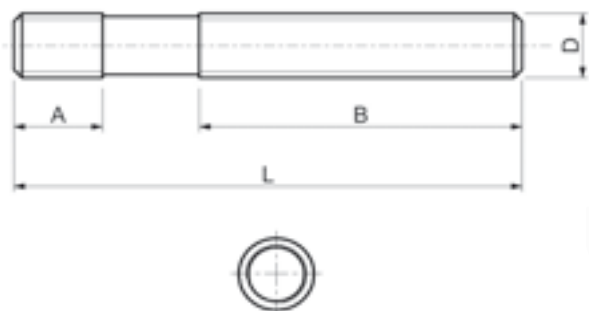
Si eseguono su richiesta misure non a catalogo / Other sizes can be supplied on request.

Su richiesta è disponibile la fornitura dell'attestato di controllo 2.2 e del certificato 3.1.B. / On demand it is available the supply of certificates 2.2 and 3.1.B.

S321


DIN 6379

PRIGIONIERI SINGOLI SINGLE STUDS




Materiale: 42CrMoS4 Classe 10.9. Filetto ottenuto per rullatura.
Diametro medio sulla parte non filettata.

Material: 42CrMoS4 Class 10.9. Rolled thread.
Average diameter on the non-threaded part.

Code	D	L	A	B	
S321.08040	M8	40	11	20	13
S321.08060		63		40	20
S321.08080		80		50	25
S321.08100		100		63	30
S321.08125		125		75	36
S321.08160		160		100	45
S321.08200		200		100	65
S321.10050	M10	50	13	25	25
S321.10060		63		35	30
S321.10080		80		50	40
S321.10100		100		75	50
S321.10120		120		75	65
S321.10160		160		100	80
S321.10200		200		125	100
S321.12050	M12	50	15	25	37
S321.12060		63		32	45
S321.12080		80		50	55
S321.12100		100		63	70
S321.12125		125		75	90
S321.12160		160		100	115
S321.12200		200		125	140
S321.12225		225		160	165
S321.12250		250		160	180
S321.14060	M14	63	17	32	65
S321.14080		80		50	80
S321.14100		100		63	95
S321.14120		120		75	120
S321.14160		160		100	150
S321.14200		200		125	195
S321.14225		225		160	225
S321.14250		250		160	240

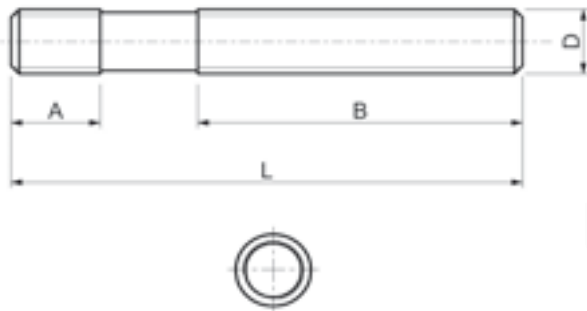
Si eseguono su richiesta misure non a catalogo / Other sizes can be supplied on request.

Code	D	L	A	B	
S321.16065	M16	63	19	35	85
S321.16080		80		50	105
S321.16100		100		63	130
S321.16125		125		75	160
S321.16160		160		100	220
S321.16200		200		125	280
S321.16225		225		160	295
S321.16250		250		160	325
S321.16315		315		180	425
S321.16350		350		180	450
S321.16400		400		250	500
S321.16450		450		250	550
S321.16500		500		315	600
S321.18080	M18	80	23	50	130
S321.18100		100		50	165
S321.18125		125		75	200
S321.18160		160		100	255
S321.18200		200		125	320
S321.18225		225		150	365
S321.18250		250		150	400
S321.18315		315		180	500
S321.18400		400		250	640
S321.20080	M20	80	27	30	165
S321.20100		100		50	205
S321.20125		125		70	255
S321.20160		160		100	325
S321.20200		200		125	410
S321.20225		225		160	465
S321.20250		250		160	510
S321.20315		315		195	640
S321.20350		350		195	720
S321.20400		400		250	820

Si eseguono su richiesta misure non a catalogo / Other sizes can be supplied on request.


Su richiesta è disponibile la fornitura dell'attestato di controllo 2.2 e del certificato 3.1.B. / On demand it is available the supply of certificates 2.2 and 3.1.B.


PRIGIONIERI SINGOLI
SINGLE STUDS



Materiale: 42CrMoS4 Classe 10.9. Filetto ottenuto per rullatura.
Diametro medio sulla parte non filettata.

Material: 42CrMoS4 Class 10.9. Rolled thread.
Average diameter on the non-threaded part.

Code	D	L	A	B	 gr
S321.20450		450	27	250	930
S321.20500		500		315	1020
S321.20600		600		315	1220
S321.20650		650		315	1350
S321.20700		700		400	1420
S321.20800		800		400	1630
S321.20900		900		400	1850
S321.22100	M22	100	31	45	270
S321.22120		120		63	300
S321.22160		160		100	430
S321.22200		200		125	500
S321.22225		225		160	570
S321.22250		250		160	670
S321.22315		315		180	750
S321.22350		350		195	840
S321.22400		400		250	950
S321.22500		500		315	1119
S321.24100	M24	100	35	45	290
S321.24125		125		70	380
S321.24160		160		100	470
S321.24200		200		125	580
S321.24225		225		125	670
S321.24250		250		160	730
S321.24315		315		180	920
S321.24350		350		195	1020
S321.24400		400		250	1150
S321.24450		450		250	1300
S321.24500		500		315	1460
S321.24600		600		315	1750
S321.27125	M27	125	39	56	485
S321.27150		150		80	570
S321.27200		200		125	770

Code	D	L	A	B	 gr
S321.27225		225	39	160	860
S321.27250		250		160	960
S321.27315		315		195	1110
S321.27400		400		250	1535
S321.27500		500		315	1930
S321.30125	M30	125	43	56	590
S321.30150		150		80	710
S321.30200		200		125	950
S321.30250		250		160	1180
S321.30315		315		195	1490
S321.30400		400		250	1880
S321.30500		500		315	2360
S321.30700		700		400	3300
S321.36160	M36	160	51	80	1100
S321.36200		200		125	1340
S321.36250		250		160	1710
S321.36315		315		195	2150
S321.36400		400		250	2740
S321.36500		500		315	3540
S321.36700		700		400	4780

Si eseguono su richiesta misure non a catalogo / Other sizes can be supplied on request.

Si eseguono su richiesta misure non a catalogo / Other sizes can be supplied on request.

Su richiesta è disponibile la fornitura dell'attestato di controllo 2.2 e del certificato 3.1.B. / On demand it is available the supply of certificates 2.2 and 3.1.B.

S5909-S5911-S5914-S5917

PRIGIONIERI A DISEGNO
STUDS ON DRAWING



Materiale: 42CrMoS4 Classe 10.9. Filetto ottenuto per rullatura.
Diametro medio sulla parte non filettata.

Su richiesta la S.P.D. grazie alla produzione diretta, è in grado di fornire prigionieri anche con misure fuori catalogo. Basta inviare una semplice richiesta d'offerta con le quantità e le caratteristiche desiderate, senza alcun impegno.

Material: 42CrMoS4 Class 10.9. Rolled thread. Average diameter on the non-threaded part.

On request S.P.D. thanks of his own production, is able to supply single studs also with special dimensions. It need a simply demand of an offer specifying quantity and characteristic needed, withouth any obligation on your part.

Esempio/Example:

Prigionieri Studs	Gambo e Radice Shank and Root	Lunghezza radice Root Length
UNI 5909	Passo grosso/ Coarse Thread	Corta/Short = 1 diam.
UNI 5911	Passo grosso/ Coarse Thread	Media/Medium = 1,5 diam.
UNI 5914	Passo grosso/ Coarse Thread	Lunga/Long = 2 diam.
UNI 5917	Passo grosso/ Coarse Thread	Extra lunga/Extra Long = 2,5 diam.

0 altri con dimensioni e lunghezza filettature a richiesta del Cliente. / Or other dimensions and thread lenght on request.

Su richiesta è disponibile la fornitura dell'attestato di controllo 2.2 e del certificato 3.1.B. / On demand it is available the supply of certificates 2.2 and 3.1.B.


S330

DADI BASSI TORNITI
TURNED SHORT NUTS



Materiale: Acciaio automatico da bonifica

Material: Automatic alloy steel

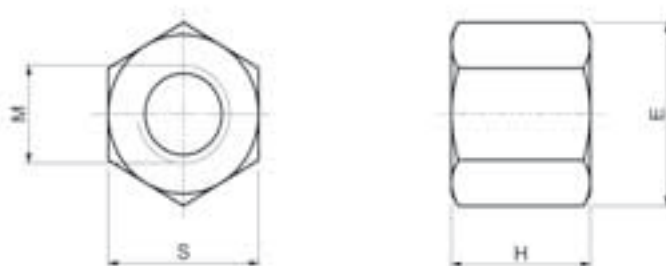
Code	M	S	E	H	
S330.08008	8	13	14,8	8	6
S330.10010	10	17	19,6	10	15
S330.12012	12	19	21,5	12	20
S330.14014	14	22	25	14	30
S330.16016	16	24	27,5	16	40
S330.18018	18	27	31	18	60
S330.20020	20	30	34,6	20	80
S330.22022	22	32	36,9	22	95
S330.24024	24	36	41,6	24	135
S330.27027	27	41	47,3	27	195
S330.30030	30	46	53,1	30	275
S330.36036	36	55	63,5	36	465
S330.42042	42	65	75	42	790
S330.48048	48	75	86,5	48	1200

Si eseguono su richiesta misure non a catalogo / Other sizes can be supplied on request.

S340


DIN 6330B

DADI ALTI TORNITI
TURNED TALL NUTS



Materiale: Acciaio automatico da bonifica

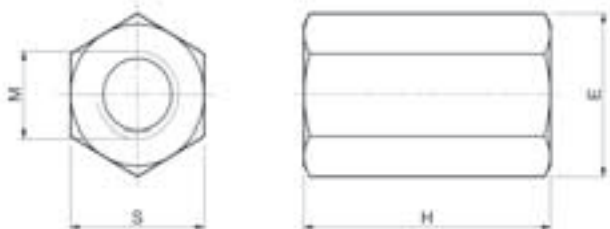
Material: Automatic alloy steel

Code	M	S	E	H	
S340.06009	6	10	11,5	9	5
S340.08012	8	13	14,8	12	9
S340.10015	10	17	19,6	15	20
S340.12018	12	19	21,5	18	28
S340.14021	14	22	25	21	45
S340.16024	16	24	27,5	24	58
S340.18027	18	27	31	27	83
S340.20030	20	30	34,6	30	110
S340.22033	22	32	36,9	33	130
S340.24036	24	36	41,6	36	195
S340.27041	27	41	47,3	40	280
S340.30045	30	46	53,1	45	405
S340.36054	36	55	63,5	54	715
S340.42063	42	65	75	63	1170
S340.48072	48	75	86,5	72	1800

Si eseguono su richiesta misure non a catalogo / Other sizes can be supplied on request.


S350

DADI PROLUNGAMENTO
EXTENSION NUTS



Materiale: Acciaio automatico da bonifica

Material: Automatic alloy steel

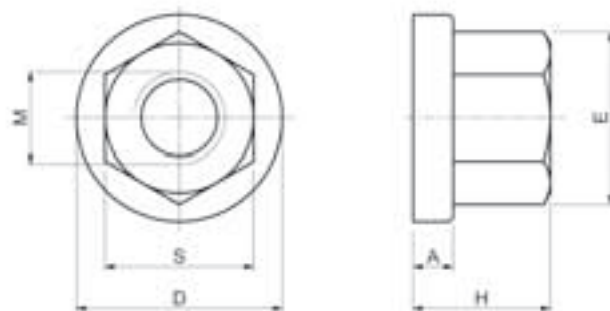
Code	M	S	E	H	
S350.06018	6	10	11,5	18	8
S350.08024	8	13	14,8	24	19
S350.10030	10	17	19,6	30	42
S350.12036	12	19	21,5	36	64
S350.14042	14	22	25	42	95
S350.16048	16	24	27,5	48	120
S350.18054	18	27	31	54	170
S350.20060	20	30	34,6	60	240
S350.22066	22	32	36,9	66	280
S350.24072	24	36	41,6	72	400
S350.27081	27	41	47,3	81	600
S350.30090	30	46	53,1	90	850
S350.36108	36	55	63,5	108	1470
S350.42126	42	65	75	126	2340
S350.48144	48	75	86,5	144	3600

Si eseguono su richiesta misure non a catalogo / Other sizes can be supplied on request.

S351


DIN 6331

DADI CON RONDELLA
NUTS WITH WASHER



Materiale: Acciaio automatico da bonifica

Material: Automatic alloy steel

Code	M	S	E	H	A	D	
S351.00008	8	13	14,8	12	3,5	18	12
S351.00010	10	17	19,6	15	4	22	21
S351.00012	12	19	21,5	18	4	25	36
S351.00014	14	22	25	21	4,5	28	51
S351.00016	16	24	27,5	24	5	31	70
S351.00018	18	27	31	27	5	34	95
S351.00020	20	30	34,6	30	6	37	130
S351.00022	22	32	36,9	33	6	40	160
S351.00024	24	36	41,6	36	6	45	230
S351.00027	27	41	47,3	40	8	51	320
S351.00030	30	46	53,1	45	8	58	470
S351.00036	36	55	63,5	54	10	68	800
S351.00042	42	65	75	63	12	80	1340
S351.00048	48	75	86,5	72	14	92	2040

Si eseguono su richiesta misure non a catalogo / Other sizes can be supplied on request.



S360

DIN 508 - UNI 5531

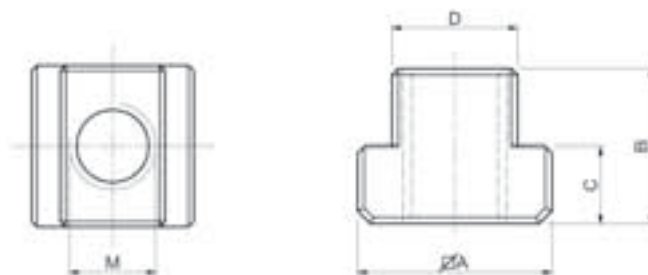
TASSELLI PER CAVE A "T"





Materiale: Acciaio da bonifica

Code	M	D	A	B	C		
S360.06008	6	7,7	13x13	10	6	8	9
S360.08010	8	9,7	15x15	12	6	10	12
S360.08012	8	11,7	18x18	14	7	12	22
S360.10012	10						20
S360.08014	8						41
S360.10014	10	13,7	22x22	16	8	14	37
S360.12014	12						35
S360.08016	8						61
S360.10016	10	15,7	25x25	18	9	16	59
S360.12016	12						56
S360.14016	14						52
S360.08018	8						91
S360.10018	10						87
S360.12018	12	17,7	28x28	20	10	18	82
S360.14018	14						70
S360.16018	16						60

NUTS FOR T-SLOTS



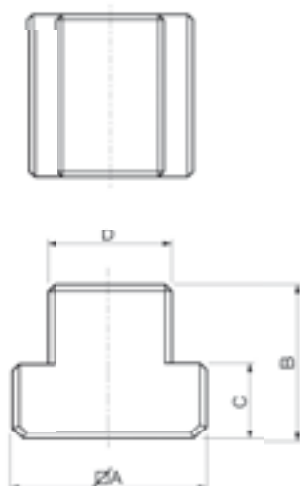
Material: Tempering steel

Code	M	D	A	B	C		
S360.16020	16	19,7	32x32	24	12	20	110
S360.18020	18						100
S360.16022	16						176
S360.18022	18	21,7	35x35	28	14	22	163
S360.20022	20						155
S360.16024	16						260
S360.20024	20	23,7	40x40	32	16	24	235
S360.22024	22						220
S360.16028	16						383
S360.20028	20	27,7	44x44	36	18	28	355
S360.22028	22						340
S360.24028	24						322
S360.24030	24	29,7	48x48	38	19	30	440
S360.27032	27	31,6	50x50	40	20	32	460
S360.30036	30	35,6	54x54	44	22	36	590
S360.36042	36	41,6	65x65	52	26	42	1010

S361


NR. 508R

TASSELLI PER CAVE A "T" SENZA FORO BLANKS T-NUTS



Materiale: Acciaio da bonifica

Material: Tempering steel

Code	D	A	B	C		
S361.00008	7,7	13x13	10	6	8	10
S361.00010	9,7	15x15	12	6	10	16
S361.00012	11,7	18x18	14	7	12	27
S361.00014	13,7	22x22	16	8	14	50
S361.00016	15,7	25x25	18	9	16	70
S361.00018	17,7	28x28	20	10	18	95
S361.00020	19,7	32x32	24	12	20	150
S361.00022	21,7	35x35	28	14	22	210
S361.00024	23,7	40x40	32	16	24	300
S361.00028	27,7	44x44	36	18	28	430
S361.00032	31,6	50x50	40	20	32	630
S361.00036	35,6	54x54	44	22	36	800
S361.00042	41,6	65x65	52	26	42	1410

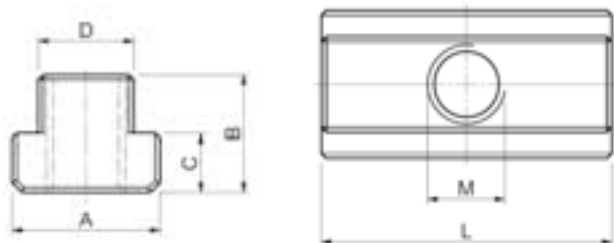
Si eseguono su richiesta misure non a catalogo / Other sizes can be supplied on request.

Su richiesta è disponibile la fornitura dell'attestato di controllo 2.2 e del certificato 3.1.B. / On demand it is available the supply of certificates 2.2 and 3.1.B.

S362

NR. 508L

TASSELLI PER CAVE A "T" DOPPIA LUNGHEZZA
EXTENDED NUTS FOR T-SLOTS



Materiale: Acciaio da bonifica

Material: Tempering steel

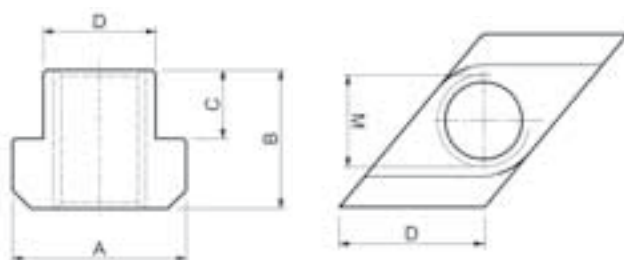
Code	M	D	L	A	B	C		
S362.06008	6	7,7	26	13	10	6	8	14
S362.08010	8	9,7	30	15	12	6	10	30
S362.10012	10	11,7	36	18	14	7	12	49
S362.12014	12	13,7	44	22	16	8	14	82
S362.14016	14	15,7	50	25	18	9	16	120
S362.16018	16	17,7	56	28	20	10	18	170
S362.18020	18	19,7	64	32	24	12	20	260
S362.20022	20	21,7	70	35	28	14	22	360
S362.22024	22	23,7	80	40	32	16	24	535
S362.24028	24	27,7	88	44	36	18	28	730
S362.27032	27	31,6	100	50	40	20	32	1090
S362.30036	30	35,6	108	54	44	22	36	1390

Si eseguono su richiesta misure non a catalogo / Other sizes can be supplied on request.

S363



NR. 510

TASSELLI PER CAVE ROMBOIDALI
NUTS FOR T-SLOTS "RHOMBUS"



Materiale: Acciaio da bonifica

Material: Tempering steel

Code	M	D	A	B	C		
S363.10012	10	11,7	18	14	7	12	14
S363.10014	10	13,7	22	16	8	14	27
S363.12014	12	13,7	22	16	8	14	22
S363.14016	14	15,7	25	18	9	16	33
S363.10018	10	17,7	28	20	10	18	64
S363.16018	16	17,7	28	20	10	18	46
S363.16020	16	19,7	32	24	12	20	79
S363.18020	18	19,7	32	24	12	20	70
S363.16022	16	21,7	35	28	14	22	119
S363.20022	20	21,7	35	28	14	22	98
S363.16028	16	27,7	44	36	18	28	278
S363.20028	20	27,7	44	36	18	28	240
S363.24028	24	27,7	44	36	18	28	215
S363.30036	30	35,6	54	44	22	36	430

Si eseguono su richiesta misure non a catalogo / Other sizes can be supplied on request.

S370

RONDELLE NORMALI TORNITE
FLAT WASHERS



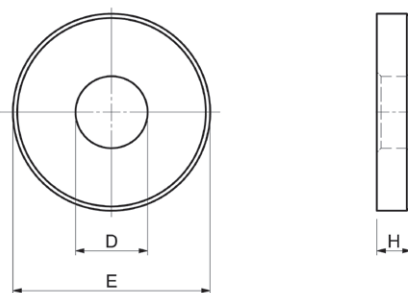
S380

RONDELLE ALTE TORNITE
THICK WASHERS



S390

RONDELLE LARGHE TORNITE
BROAD WASHERS



Materiale: Acciaio automatico da bonifica

Material: Automatic alloy steel

Code	D	E	H	gr
S370.00006	6,6	13	3,5	3
S370.00008	8,4	18	4	6
S370.00010	10,5	22	4	9
S370.00012	13	28	5	20
S370.00014	15	35	6	35
S370.00016	17	35	6	35
S370.00018	19	40	6	45
S370.00020	21	40	6	45
S370.00022	23	45	8	75
S370.00024	25	45	8	70
S370.00027	28	60	10	125
S370.00030	31	60	10	161
S370.00036	37	70	12	190
S370.00042	43	80	12	260
S370.00048	49	90	12	415

Si eseguono su richiesta misure non a catalogo /
Other sizes can be supplied on request

Materiale: Acciaio automatico da bonifica

Material: Automatic alloy steel

Code	D	E	H	gr
S380.00006	6,6	20	8	17
S380.00008	8,4	35	8	55
S380.00010	10,5	35	8	55
S380.00012	13	40	8	70
S380.00014	15	40	10	85
S380.00016	17	45	10	105
S380.00018	19	45	10	100
S380.00020	21	50	12	150
S380.00022	23	50	12	140
S380.00024	25	50	12	140
S380.00027	28	60	14	175
S380.00030	31	60	14	165

Si eseguono su richiesta misure non a catalogo /
Other sizes can be supplied on request

Materiale: Acciaio automatico da bonifica

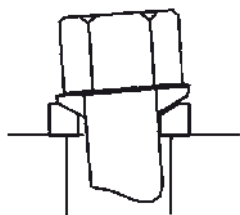
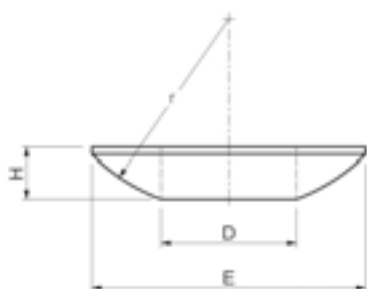
Material: Automatic alloy steel

Code	D	E	H	gr
S390.00006	6,6	17	3,5	5
S390.00008	8,4	23	4	10
S390.00010	10,5	28	4	16
S390.00012	13	35	5	35
S390.00014	15	40	5	40
S390.00016	17	45	6	70
S390.00018	19	45	6	60
S390.00020	21	50	6	73
S390.00022	23	50	8	92
S390.00024	25	60	8	170
S390.00027	28	68	10	240
S390.00030	31	68	10	230
S390.00036	38	80	12	350
S390.00042	44	100	15	670
S390.00048	50	100	17	920

Si eseguono su richiesta misure non a catalogo /
Other sizes can be supplied on request


S375.C

RONDELLE CONVESSE
SPHERICAL SEAT WASHERS



Materiale: Acciaio automatico da bonifica

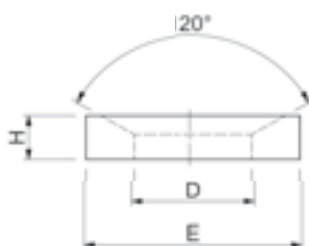
Material: Automatic alloy steel

Code	D	E	r	H	
S375.C0006	6,4	12	9	2,3	1
S375.C0008	8,4	17	12	3,2	2,5
S375.C0010	10,5	21	15	4	5
S375.C0012	13	24	17	4,6	7
S375.C0014	15	28	22	5	10
S375.C0016	17	30	22	5,3	12
S375.C0020	21	36	27	6,3	23
S375.C0024	25	44	32	8,2	42
S375.C0027	28	50	37	9,5	80
S375.C0030	31	56	41	11,2	87
S375.C0036	37	68	50	14	184
S375.C0042	43	78	58	17	297
S375.C0048	50	92	67	21	525

Si eseguono su richiesta misure non a catalogo /
Other sizes can be supplied on request

S375.D

RONDELLE CONCAVE
DISHED WASHERS



Materiale: Acciaio automatico da bonifica

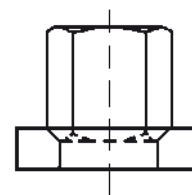
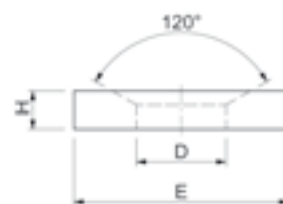
Material: Automatic alloy steel

Code	D	E	H	
S375.D0006	7,1	12	2,8	1,5
S375.D0008	9,6	17	3,5	4
S375.D0010	12	21	4,2	6,5
S375.D0012	14,2	24	5	10
S375.D0014	16,5	28	5,6	18
S375.D0016	19	30	6,2	19
S375.D0020	23,2	36	7,5	32
S375.D0024	28	44	9,5	63
S375.D0027	31,5	50	10,8	85
S375.D0030	35	56	12	133
S375.D0036	42	68	15	236
S375.D0042	49	78	18	365
S375.D0048	56	92	22	641

Si eseguono su richiesta misure non a catalogo /
Other sizes can be supplied on request


S375.G

RONDELLE CONCAVE
DISHED WASHERS



Materiale: Acciaio automatico da bonifica

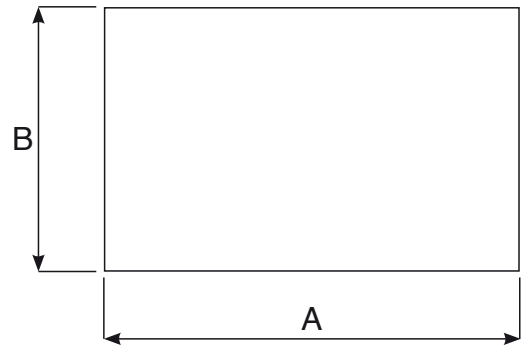
Material: Automatic alloy steel


Code	D	E	H	
S375.G0006	7,1	17	4	5,5
S375.G0008	9,6	23	4	13
S375.G0010	12	28	5	19
S375.G0012	14,2	35	5	32
S375.G0014	16,5	40	5	48
S375.G0016	19	45	6	56
S375.G0020	23,2	50	8	94
S375.G0024	28	60	10	169
S375.G0030	35	68	10	218
S375.G0036	42	80	12	350
S375.G0042	49	100	15	640
S375.G0048	56	110	17	830

Si eseguono su richiesta misure non a catalogo /
Other sizes can be supplied on request


S420

CONTENITORI CON VITI TESTA MARTELLO SERIE S310 + RONDELLE S370 SET OF HAMMERHEAD BOLTS COMPLETE TYPE S310 + WASHERS S370



Code		D	Cava	AxB
S420.00010	Nr.2	M10	10	S310.10040
				S310.10060
				S310.10080
				S310.10100
				S310.10125
				S310.10150
				S310.10170
				S370.00010
S420.00012	Nr.2	M12	12	S310.12050
				S310.12060
				S310.12080
				S310.12100
				S310.12125
				S310.12150
				S310.12170
				S310.12200
S310.12230				
S370.00012				
S420.00014	Nr.2	M14	14	S310.14050
				S310.14060
				S310.14080
				S310.14100
				S310.14125
				S310.14150
				S310.14170
				S310.14200
S310.14230				
S370.00014				
S420.00016	Nr.2	M16	16	S310.16060
				S310.16080
				S310.16100
				S310.16125
				S310.16150
				S310.16170
				S310.16200
				S310.16230
S370.00016				

Si eseguono su richiesta misure non a catalogo / Other sizes can be supplied on request

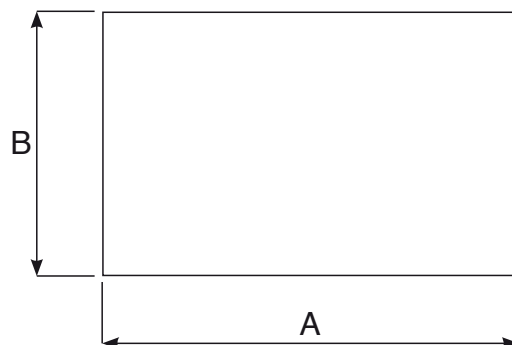
Code		D	Cava	AxB
S420.00018	Nr.2	M18	18	S310.18080
				S310.18100
				S310.18125
				S310.18150
				S310.18170
				S310.18200
				S310.18230
				S370.00018
S420.00020	Nr.2	M20	20	S310.20080
				S310.20100
				S310.20125
				S310.20150
				S310.20170
				S310.20200
				S310.20230
				S370.00020
S420.00022	Nr.2	M22	22	S310.22080
				S310.22100
				S310.22125
				S310.22150
				S310.22170
				S310.22200
				S310.22230
				S370.00022
S420.00024	Nr.2	M24	24	S310.24080
				S310.24100
				S310.24125
				S310.24150
				S310.24170
				S310.24200
				S310.24230
				S370.00024


Si eseguono su richiesta misure non a catalogo / Other sizes can be supplied on request

Su richiesta è disponibile la fornitura dell'attestato di controllo 2.2 e del certificato 3.1.B. / On demand it is available the supply of certificates 2.2 and 3.1.B.

S425

CONTENITORI CON VITI TESTA MARTELLO SERIE S315 + RONDELLE S390
SET OF HAMMERHEAD BOLTS COMPLETE TYPE S315 + WASHERS S390



Code		D	Cava	AxB
S425.00012	S315.12050	Nr.4		cm
	S315.12063	Nr.4		50X25
	S315.12080			
	S315.12100	Nr.2		
	S315.12125		M12	14
	S315.12150			
	S315.12200			
	S390.00012	Nr.10		
S420.00014	S315.14063			cm
	S315.14100			50x25
	S315.14160	Nr.4	M14	16
	S315.14230			
	S390.00014	Nr.10		
S425.00016	S315.16063			cm
	S315.16080			50X25
	S315.16100			
	S315.16125			
	S315.16160	Nr.2	M16	18
	S315.16200			
	S315.16230			
	S315.16250			Kg 10
	S390.00016	Nr.10		
S425.00020	S315.20080			cm
	S315.20100			60X25
	S315.20125			
	S315.20160	Nr.2	M20	22
	S315.20200			
	S315.20230			
	S315.20315			
	S390.00020	Nr.10		
S425.00024	S315.24100			cm
	S315.24125			60X25
	S315.24160			
	S315.24200	Nr.2	M24	28
	S315.24230			
	S315.24250			
	S315.24315			
	S390.00024	Nr.10		

Contenitore vuoto per confezioni S420 - S425 - S430

Empty metal case for packing S420 - S425 - S430

Code	Descrizione Description	AxB (cm)	H (cm)	
228.S420.10	Contenitore vuoto per viti M10			
228.S420.12	Contenitore vuoto per viti M12	30x50		2400
228.S420.14	Contenitore vuoto per viti M14			
228.S420.16	Contenitore vuoto per viti M16		7	33
228.S420.18	Contenitore vuoto per viti M18			
228.S420.20	Contenitore vuoto per viti M20			
228.S420.22	Contenitore vuoto per viti M22	28x60		2700
228.S420.24	Contenitore vuoto per viti M24			

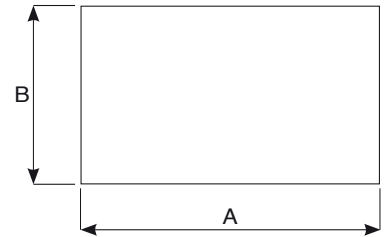
Si eseguono su richiesta misure non a catalogo / Other sizes can be supplied on request.

Su richiesta è disponibile la fornitura dell'attestato di controllo 2.2 e del certificato 3.1.B. / On demand it is available the supply of certificates 2.2 and 3.1.B.

S430

CONTENITORI CON PRIGIONIERI S320 MONTATI CON TASSELLO S360 + RONDELLE S370

SET OF STUDS S320 COMPLETE WITH "T" SLOT NUT S360 + WASHERS S370



Code		D	Cava	AxB	
S430.00008	S320.08040			cm	
	S320.08060			35x21	
	S320.08080				
	S320.08100				
	S320.08125	Nr.2	M8	10	
	S320.08160				
	S320.08200				
	S360.08010	Nr.14		Kg	
	S370.00008	Nr.10		2	
	S430.00010	S320.10060	Nr.2		
S320.10080					
S320.10100		Nr.4			
S320.10120		Nr.2	M10	12	
S320.10160					
S320.10200					
S360.10012		Nr.14		Kg	
S370.00010		Nr.10			
S430.00012		S320.12060	Nr.2		
		S320.12080			
	S320.12100	Nr.4		cm	
	S320.12125	Nr.2	M12	14	
	S320.12160				
	S320.12200				
	S320.12225				
	S320.12250			Kg	
	S360.12014	Nr.18		5,5	
	S370.00012	Nr.10			
S430.00014	S320.14060	Nr.2			
	S320.14080				
	S320.14100	Nr.4		cm	
	S320.14120	Nr. 2	M14	16	
	S320.14160				
	S320.14200				
	S320.14225				
	S320.14250			Kg	
	S360.14016	Nr.18		6	
	S370.00014	Nr.10			

Code		D	Cava	AxB
S430.00016	S320.16065			
	S320.16080			cm
	S320.16100			50x25
	S320.16125	Nr.2	M16	18
	S320.16160			
	S320.16200			
	S320.16250			
	S320.16315			Kg
	S360.16018	Nr.16		6,5
	S370.00016	Nr.10		
S430.00018	S320.18080			cm
	S320.18100			60x25
	S320.18125			
	S320.18160			
	S320.18200	Nr.2	M18	20
	S320.18250			
	S320.18315			
	S360.18020	Nr.14		Kg
	S370.00018	Nr.10		8,5
	S430.00020	S320.20080		
S320.20100				60x25
S320.20125				
S320.20160				
S320.20200		Nr.2	M20	22
S320.20250				
S320.20315				
S360.20022		Nr.14		Kg
S370.00020		Nr.10		11
S430.00022		S320.22100		
	S320.22120			60x25
	S320.22160			
	S320.22200	Nr.2	M22	24
	S320.22225			
	S320.22250			
	S320.22315			
	S360.22024	Nr.14		Kg
	S370.00022	Nr.10		13,5
	S430.00024	S320.24100		
S320.24125				60x25
S320.24160				
S320.24200		Nr.2	M24	28
S320.24225				
S320.24250				
S320.24315				
S360.24028		Nr.14		Kg
S370.00024		Nr.10		16

Su richiesta è disponibile la fornitura dell'attestato di controllo 2.2 e del certificato 3.1.B. / On demand it is available the supply of certificates 2.2 and 3.1.B.

VT10

VITI PER TORRETTA
TURRET BOLTS

Materiale: Acciaio automatico da bonifica.

Material: Automatic alloy steel.



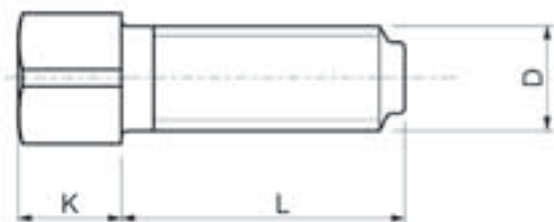
Code	D	L	K	☐	Torretta	⚖ gr
VT10.00008	M8	25	8	8	A	13
VT10.00010	M10	35	10	10	A	23
VT10.00012	M12	46	12	12	B-C	44
VT10.00014	M14	46	14	14	D-F	64
VT10.00016	M16	56	16	16	-	102
VT10.00308	3/8 Ww	36	9	9	A	20
VT10.00516	5/16 Ww	25	8	8	M	11
VT10.00716	7/16 Ww	48	10	10	B	35
VT10.00102	1/2 Ww	48	12	12	C	48
VT10.00916	9/16Ww	58	14	14	D-F	76

Si eseguono su richiesta misure non a catalogo / Other sizes can be supplied on request.

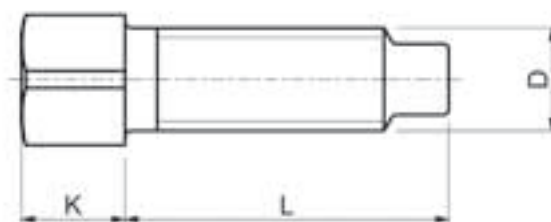
VT6050

A DISEGNO
ON DRAWING

Tipo A



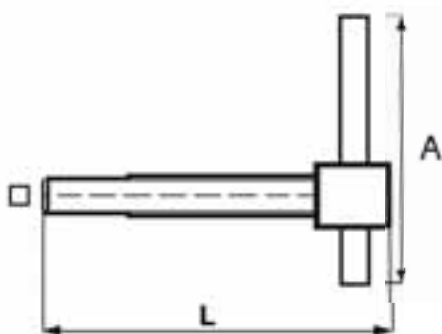
Tipo B



Su richiesta del Cliente è possibile la fornitura di viti con la lunghezza desiderata. / Screws with special length can be supplied on request.

CA10

CHIAVI PER AUTOCENTRANTI
SELF-CENTERING CHUCKS KEYS



Tolleranze quadro maschio -0,05/-0,1. Materiale: 18NiCrMo5.

Male square tolerance -0,05/-0,1. Material: 18NiCrMo5.

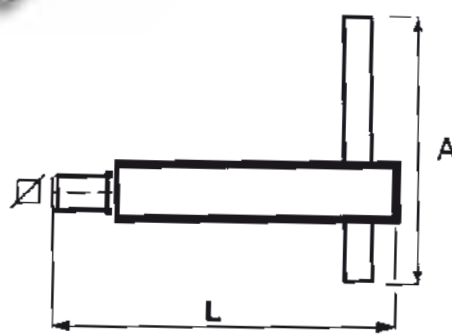
Code	▣	L	A	kg
CA10.00006	6	55	120	0,065
CA10.00007	7	60	120	0,070
CA10.00008	8	70	130	0,125
CA10.00009	9	80	150	0,165
CA10.00010	10	90	200	0,290
CA10.00011	11	90	250	0,375
CA10.00012	12	90	250	0,425
CA10.00013	13	105	310	0,675
CA10.00014	14	105	350	0,810
CA10.00015	15	130	450	1,280
CA10.00016	16	130	430	1,310
CA10.00017	17	130	450	1,360
CA10.00018	18	150	450	1,510
CA10.00019	19	150	450	1,580
CA10.00022	22	165	500	2,070

Si eseguono su richiesta misure non a catalogo / Other sizes can be supplied on request.

CA20

CHIAVI PER AUTOCENTRANTI
ANTINFORTUNISTICHE

KEYS FOR SELF-CENTERING
CHUCKS SAFETY TYPE



Materiale: C45

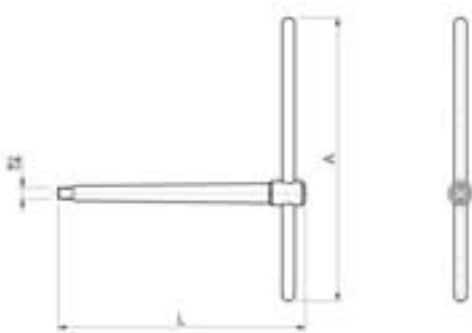
Material: C45.

Code	▣	L	A	kg
CA20.00007	7	130	300	0,530
CA20.00008	8	130	250	0,510
CA20.00009	9	130	300	0,400
CA20.00010	10	130	330	0,640
CA20.00011	11	130	330	0,630
CA20.00012	12	130	330	0,800
CA20.00013	13	130	330	0,800
CA20.00014	14	130	330	0,810
CA20.00015	15	130	300	0,790
CA20.00016	16	130	400	0,990
CA20.00017	17	130	350	0,880
CA20.00018	18	130	350	0,950

Si eseguono su richiesta misure non a catalogo / Other sizes can be supplied on request.

CL10

CHIAVI PER AUTOCENTRANTI CAM-LOCK
CAM-LOCK KEYS FOR SELF-CENTERING
CHUCKS



Tolleranze quadro maschio -0,05/-0,1. Materiale: 18NiCrMo5.

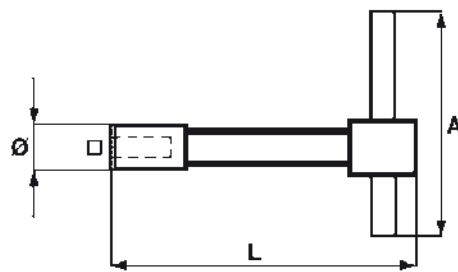
Male square tolerance -0,05/-0,1. Material: 18NiCrMo5.

Code	▧	L	A	kg
CL10.00010	10	218	250	0,565
CL10.00011	11	218	250	0,630
CL10.00012	12	218	250	0,750
CL10.00013	13	218	250	0,865
CL10.00014	14	218	310	1,060
CL10.00016	16	218	310	1,140

Si eseguono su richiesta misure non a catalogo / Other sizes can be supplied on request.

CP10

CHIAVI PER PIATTAFORME
KEYS FOR PLATFORMS



Tolleranze quadro femmina +0,1/+0,2

Materiale: C45.

Female square tolerance: +0,1/+0,2

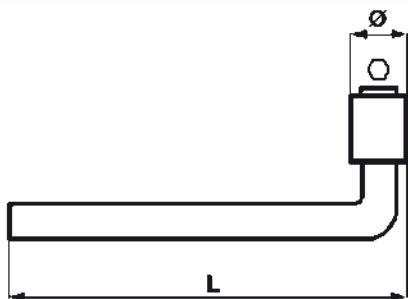
Material: C45.

Code	▧	Ø	L	A	kg
CP10.00008	8	18	90	200	0,265
CP10.00009	9	18	90	200	0,270
CP10.00010	10	22	110	285	0,555
CP10.00011	11	23	120	320	0,680
CP10.00012	12	24	130	340	0,740
CP10.00013	13	25	140	350	0,780
CP10.00014	14	25	140	350	0,790
CP10.00015	15	29	180	450	1,280
CP10.00016	16	29	180	450	1,500
CP10.00017	17	31	200	500	1,810
CP10.00018	18	34	220	420	1,890
CP10.00019	19	34	180	500	1,840
CP10.00020	20	38	230	500	2,000
CP10.00022	22	40	230	500	2,400
CP10.00024	24	42	230	500	2,700
CP10.00025	25	42	230	500	2,800
CP10.00027	27	44	230	500	3,300

Si eseguono su richiesta misure non a catalogo / Other sizes can be supplied on request.

CP30

CHIAVI A PIPA
ELBOW WRENCHES



Tolleranze esagono femmina +0,1/+0,2
Materiale: 39NiCrMo3.

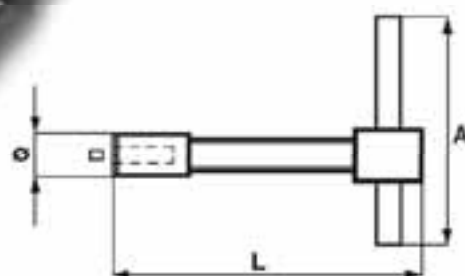
Female hexagon tolerance: +0,1/+0,2
Material: 39NiCrMo3.

Code	Hexagon	Width	L	Weight (kg)
CP30.00012	12	18	160	0,165
CP30.00014	14	21	180	0,265
CP30.00017	17	26	220	0,365
CP30.00019	19	28	280	0,610
CP30.00021	21	30	350	0,970

Si eseguono su richiesta misure non a catalogo / Other sizes can be supplied on request.

CT10

CHIAVI PER TORRETTE PORTAUTENSILI
KEYS FOR MACHINE TOOL TURRETS

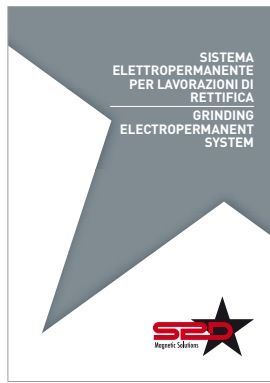
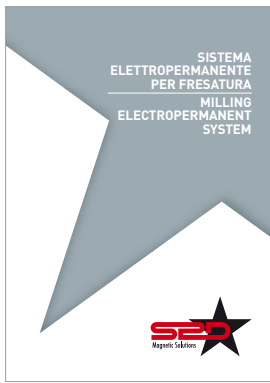


Tolleranze quadro femmina +0,1/+0,2
Materiale: C45.

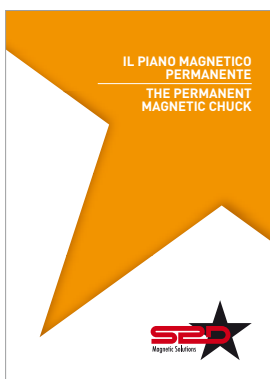
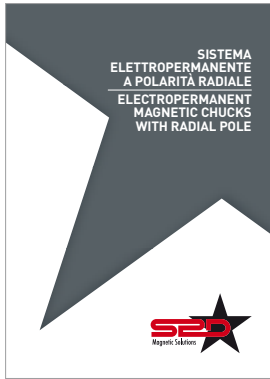
Female square tolerance: +0,1/+0,2
Material: C45.

Code	Width	Height	L	A	Weight (kg)
CT10.00007	7	14	18	67	0,070
CT10.00008	8	14	80	60	0,090
CT10.00009	9	17	80	100	0,145
CT10.00010	10	19	100	100	0,205
CT10.00011	11	21	110	115	0,250
CT10.00012	12	21	110	115	0,290
CT10.00013	13	24	110	115	0,355
CT10.00014	14	25	120	150	0,435
CT10.00016	16	28	125	150	0,485

Si eseguono su richiesta misure non a catalogo / Other sizes can be supplied on request.



FOLLOW
THE STAR
OF MAGNETIC
SOLUTIONS



S.P.D. S.p.A.

Via Galileo Galilei, 2/4
24043 Caravaggio (BG) ITALY
Tel. +39 0363 546 511
Fax +39 0363 52578
info@spd.it - www.spd.it

