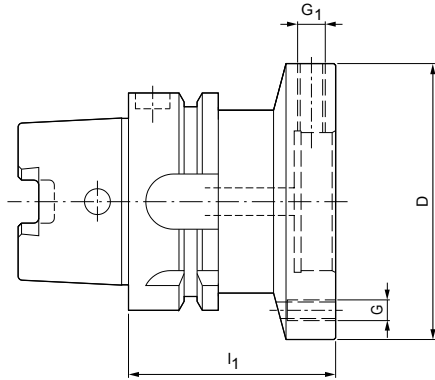


Modular hollow shank taper-A adapters

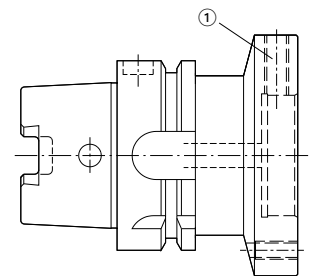
HSK-A (hollow shank taper form A) shank according to DIN 69893-1



HSK-A	Module diameter D	Dimensions			Order designation	Order no.
		l ₁	G	G ₁		
40	60,0	60,0	M5	M8x1	16.150.40.60.Z/60	30615827
50	60,0	60,0	M5	M8x1	16.150.50.60.Z/60	30584456
50	70,0	60,0	M6	M8x1	16.150.50.70.Z/60	30584465
50	80,0	60,0	M6	M8x1	16.150.50.80.Z/60	30584469
63	60,0	60,0	M5	M8x1	16.150.63.60.Z/60	30584473
63	70,0	60,0	M6	M8x1	16.150.63.70.Z/60	30584477
63	80,0	60,0	M6	M8x1	16.150.63.80.Z/60	30584478
63	100,0	65,0	M8	M10x1	16.150.63.100.Z/65	30584481
63	117,0	65,0	M8	M10x1	16.150.63.117.Z/65	30584482
80	60,0	50,0	M5	M8x1	16.150.80.60.Z/50	30584487
80	70,0	60,0	M6	M8x1	16.150.80.70.Z/60	30584489
80	80,0	60,0	M6	M8x1	16.150.80.80.Z/60	30584490
80	100,0	65,0	M8	M10x1	16.150.80.100.Z/65	30584491
80	117,0	65,0	M8	M10x1	16.150.80.117.Z/65	30584492
80	140,0	75,0	M10	M10x1	16.150.80.140.Z/75	30584493
100	60,0	55,0	M5	M8x1	16.150.100.60.Z/55	30584495
100	70,0	55,0	M6	M8x1	16.150.100.70.Z/55	30584497
100	80,0	55,0	M6	M8x1	16.150.100.80.Z/55	30584498
100	100,0	65,0	M8	M10x1	16.150.100.100.Z/65	30584499
100	117,0	65,0	M8	M10x1	16.150.100.117.Z/65	30584500
100	140,0	75,0	M10	M10x1	16.150.100.140.Z/75	30584502

Spare parts

For module diameter D	Quantity required	① Threaded pin		
		Size		Order no.
60 - 80	4	M8x1x16		10075355
100 - 140	4	M10x1x20	K2865-34	10075099



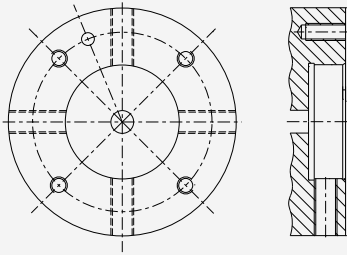
Dimensions in mm.

For spare parts, see product page. For accessories, see "Accessories and spare parts" section.

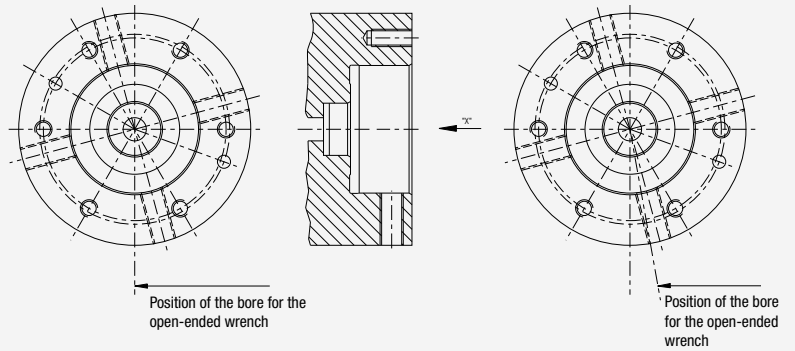
Additional dimensions and special designs available upon request.

Fitting dimensions for KS flanges

Spindle connection contour for flange adapter in accordance with MN5000-14



Spindle connection contour for adapter flange according to MN5000-12



Spindle connection contour for adapter flange for short spindles in accordance with MN5000-13

