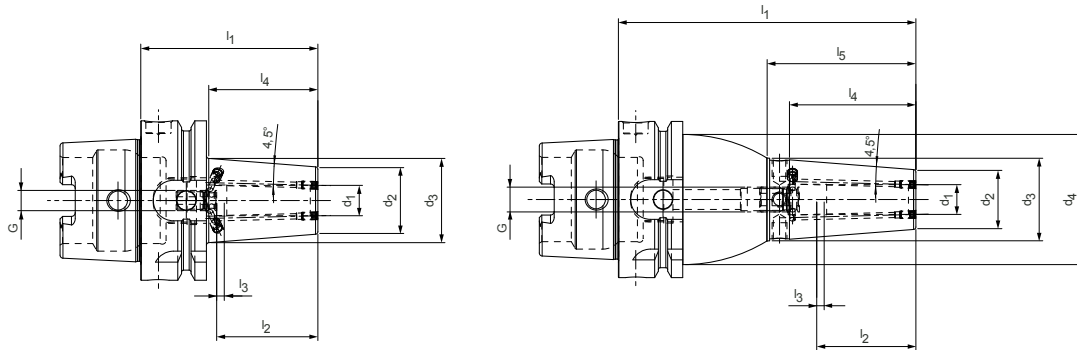


# Shrink chuck

Reinforced design, with axial tool length adjustment

HSK-A (hollow shank taper form A) shank according to DIN 69893-1



**Design with two cooling channel outlets, resealable | Available on request**

HSK-A	Dimensions									G	Order designation	Order no.
	d <sub>1</sub>	d <sub>2</sub>	d <sub>3</sub>	d <sub>4</sub>	l <sub>1</sub>	l <sub>2</sub>	l <sub>3</sub>	l <sub>4</sub>	l <sub>5</sub>			
63	6,0	22,0	28,8	-	70,0	36,0	10,0	43,1	-	M5	16.307.63.06.KKB/70	30655242
63	6,0	21,0	29,0	52,5	120,0	36,0	10,0	42,0	51,0	M5	16.307.63.06.KKB/120	30655250
63	8,0	22,0	28,8	-	70,0	36,0	10,0	43,1	-	M6	16.307.63.08.KKB/70	30655243
63	8,0	21,0	29,0	52,5	120,0	36,0	10,0	42,0	51,0	M6	16.307.63.08.KKB/120	30655251
63	10,0	26,5	33,3	-	70,0	36,0	5,0	43,1	-	M8x1	16.307.63.10.KKB/70	30655244
63	10,0	24,0	32,7	52,5	120,0	41,0	10,0	46,0	55,0	M8x1	16.307.63.10.KKB/120	30655252
63	12,0	26,5	33,3	-	70,0	40,0	3,0	43,1	-	M8x1	16.307.63.12.KKB/70	30655245
63	12,0	24,0	33,4	52,5	120,0	47,0	10,0	51,0	60,0	M10x1	16.307.63.12.KKB/120	30655253
63	16,0	29,5	37,1	-	75,0	45,0	5,0	48,1	-	M8x1	16.307.63.16.KKB/75	30655246
63	16,0	27,0	36,9	52,5	120,0	50,0	10,0	54,0	63,0	M12x1	16.307.63.16.KKB/120	30655254
63	20,0	35,5	43,1	-	75,0	45,0	3,0	48,1	-	M8x1	16.307.63.20.KKB/75	30655247
63	20,0	33,0	43,2	52,5	120,0	52,0	10,0	56,0	65,0	M16x1	16.307.63.20.KKB/120	30655255
63	25,0	45,0	52,5	-	85,0	53,0	5,0	47,65	-	M8x1	16.307.63.25.KKB/85	30655248
63	25,0	44,0	52,5	-	120,0	58,0	10,0	54,0	-	M16x1	16.307.63.25.KKB/120	30655256
63	32,0	45,0	52,5	-	85,0	55,0	3,0	47,65	-	M8x1	16.307.63.32.KKB/85	30655249
63	32,0	44,0	52,5	-	120,0	62,0	10,0	54,0	-	M16x1	16.307.63.32.KKB/120	30655257

Dimensions in mm.

For accessories and spare parts see "Accessories and spare parts" section.

Additional dimensions and special designs available upon request.