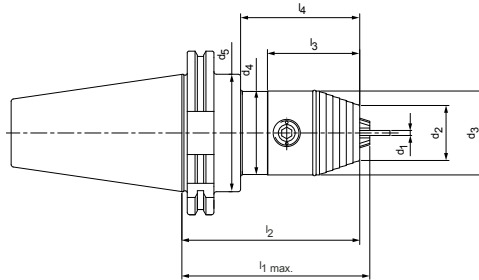
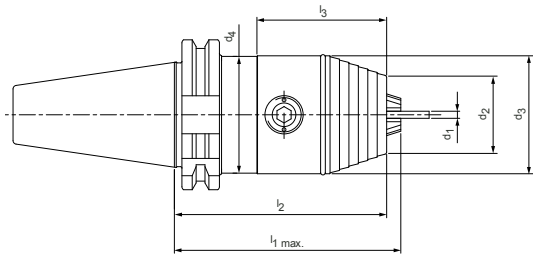


# CNC precision drill chucks

Without coolant outlet

Shank SK according to ISO 7388-1 Form AD



## Preferred series available from stock

Steep taper	Dimensions									Order designation	Order no.
	Clamping range d <sub>1</sub>	d <sub>2</sub>	d <sub>3</sub>	d <sub>4</sub>	d <sub>5</sub>	l <sub>1</sub> max.	l <sub>2</sub>	l <sub>3</sub>	l <sub>4</sub>		
30	0,3 - 8,0	23,0	36,0	-	-	73,0	70,0	40,5	-	11.296.30.08	30335949
30	0,5 - 13,0	35,0	50,0	49,8	45,0	117,0	111,0	54,5	76,0	11.296.30.13	30335950
40	0,3 - 8,0	23,0	36,0	-	-	73,0	70,0	40,5	-	11.296.40.08	30335952
40	0,5 - 13,0	35,0	50,0	-	-	96,0	90,0	54,5	-	11.296.40.13	30335953
40	2,5 - 16,0	36,0	57,0	49,8	-	101,0	95,0	60,0	-	11.296.40.16	30335954
50	0,5 - 13,0	35,0	50,0	49,8	70,0	112,0	106,0	54,5	76,0	11.296.50.13	30335959
50	2,5 - 16,0	36,0	57,0	49,8	-	117,0	111,0	60,0	76,0	11.296.50.16	30335962

Dimensions in mm.

For accessories and spare parts see "Accessories and spare parts" section.

Additional dimensions and special designs available upon request.