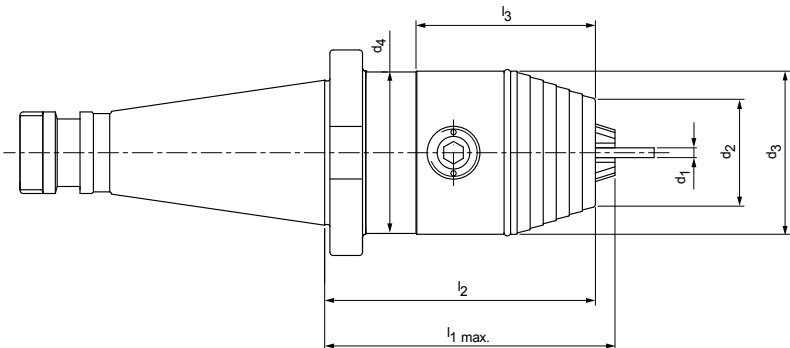


CNC precision drill chucks

Without coolant outlet
Shank SK according to DIN 2080 Form A



Available on request

SK/ISO	Dimensions							Order designation	Order no.
	Clamping range d_1	d_2	d_3	d_4	$l_1 \text{ max.}$	l_2	l_3		
30	0,3 - 8,0	23,0	36,0	35,8	63,0	60,0	42,0	10.296.30.08	30335939
40	0,3 - 8,0	23,0	36,0	35,8	65,0	62,0	42,0	10.296.40.08	30335942
30	0,5 - 13,0	35,0	50,0	49,8	104,0	98,0	55,0	10.296.30.13	30335940
40	0,5 - 13,0	35,0	50,0	49,5	89,0	83,0	55,0	10.296.40.13	30335944
50	0,5 - 13,0	35,0	50,0	49,5	106,0	100,0	55,0	10.296.50.13	303359947
40	2,5 - 16,0	36,0	57,0	50,0	94,0	88,0	60,0	10.296.40.16	30335945
50	2,5 - 16,0	36,0	57,0	50,0	111,0	105,0	60,0	10.296.50.16	30335948

Dimensions in mm.
For accessories and spare parts see "Accessories and spare parts" section.
Additional dimensions and special designs available upon request.